

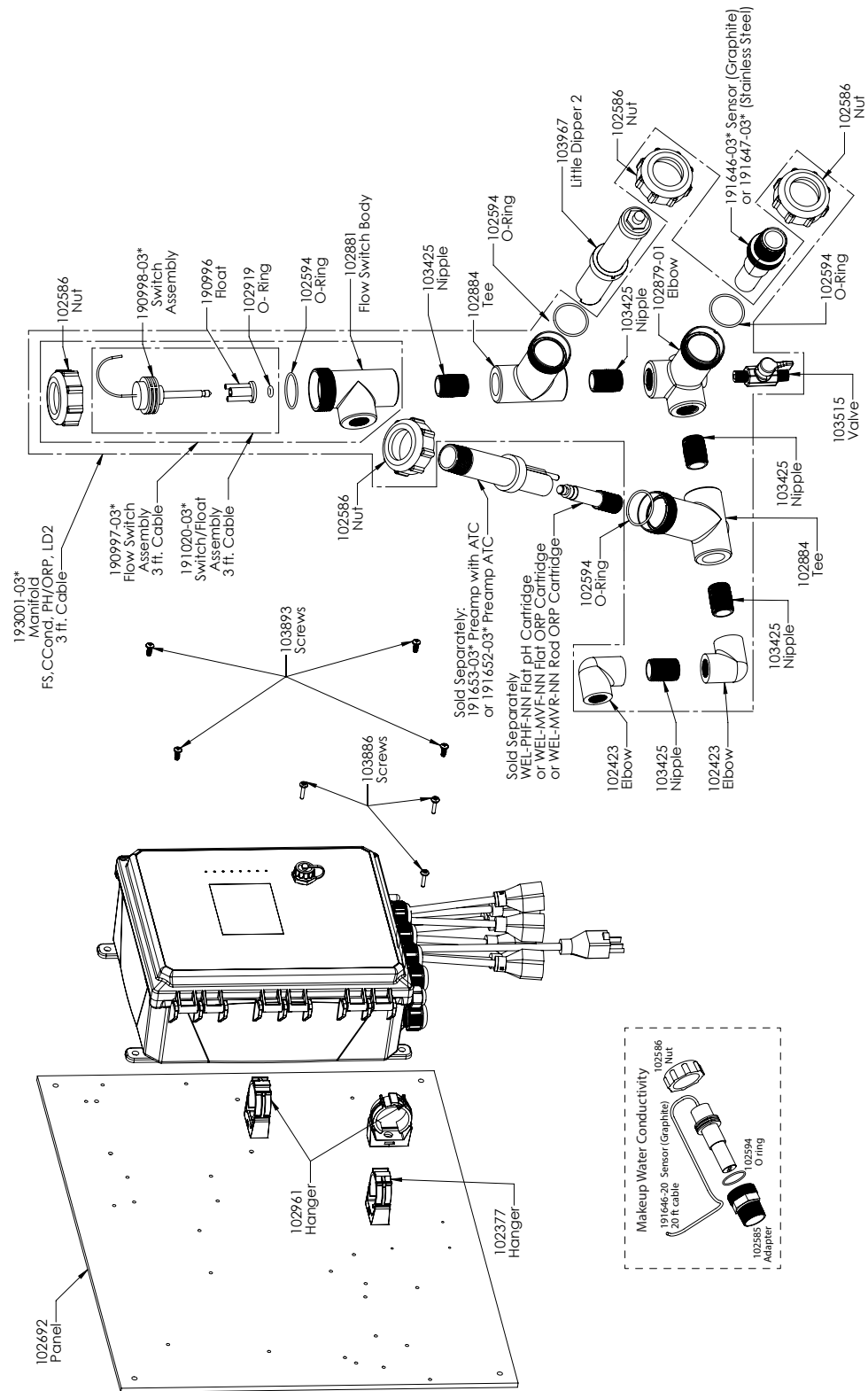
WCT900 Sensor Options PAFMNN, PBFMNN, PAHMNN, PBHMNN, PAIMNN, PBIMNN

PAFMNN: Graphite contacting conductivity + Flow Switch manifold on panel + WEL-PHF no ATC + LD2

PAHMNN: + WEL-MVR + LD2 PAIMNN: + WEL-MVF + LD2

PBFMNN: 316SS contacting conductivity + Flow Switch manifold on panel + WEL-PHF no ATC + LD2

PBHMNN: + WEL-MVR + LD2 PBIMNN: + WEL-MVF + LD2



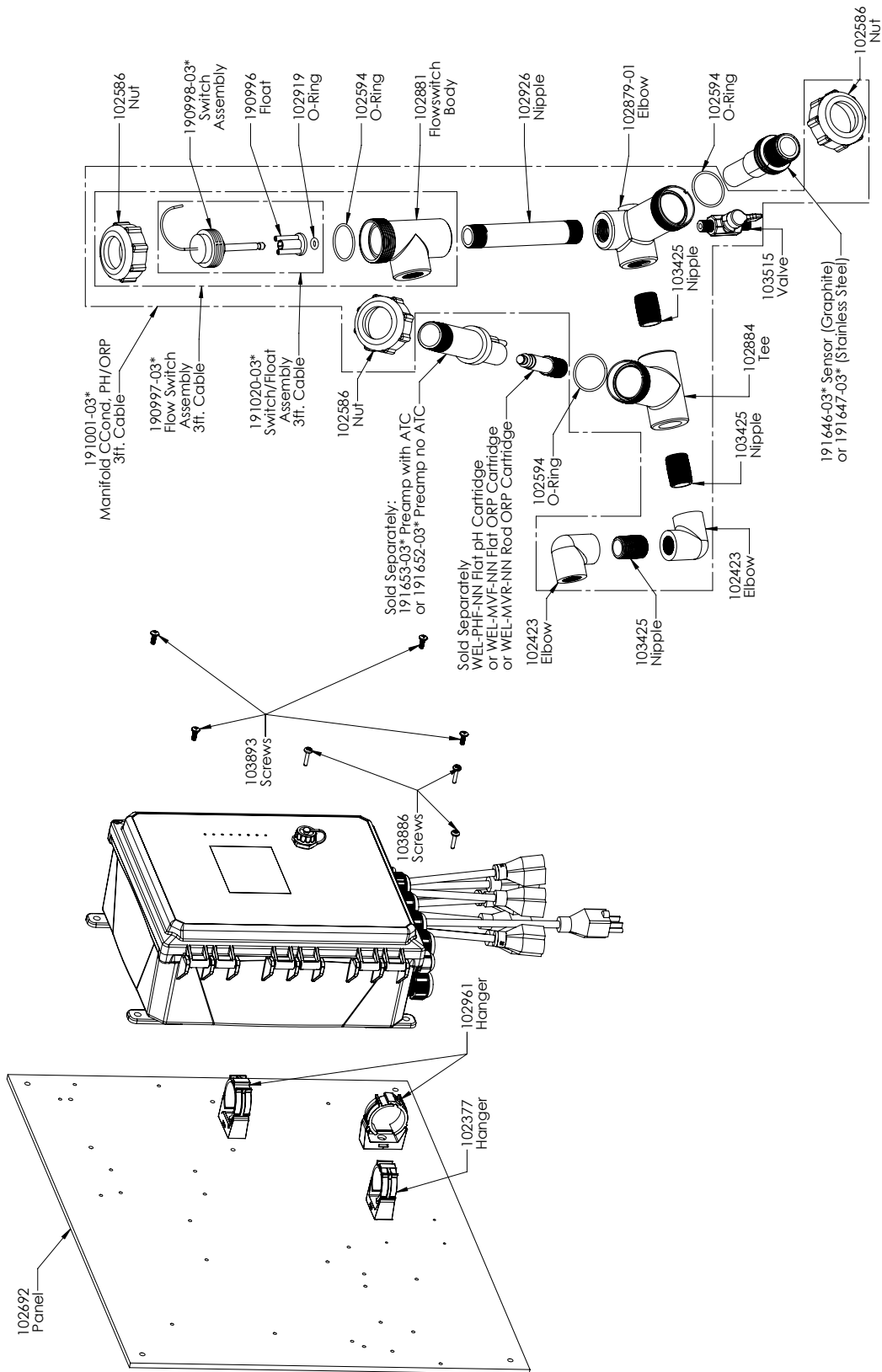
WCT900 Sensor Options PAEFMN, PBEFMN, PAEHMN, PBEHMN, PAEIMN, PBEIMN

PAEFMN: Graphite contacting conductivity + Flow Switch manifold on panel
+ Makeup Conductivity + WEL-PHF no ATC + LD2

PAEHMN: + WEL-MVR + LD2 PAEIMN: + WEL-MVF + LD2

PBEFMN: 316SS contacting conductivity + Flow Switch manifold on panel
+ Makeup Conductivity + WEL-PHF no ATC + LD2

PBEHMN: + WEL-MVR + LD2 PBEIMN: + WEL-MVF + LD2



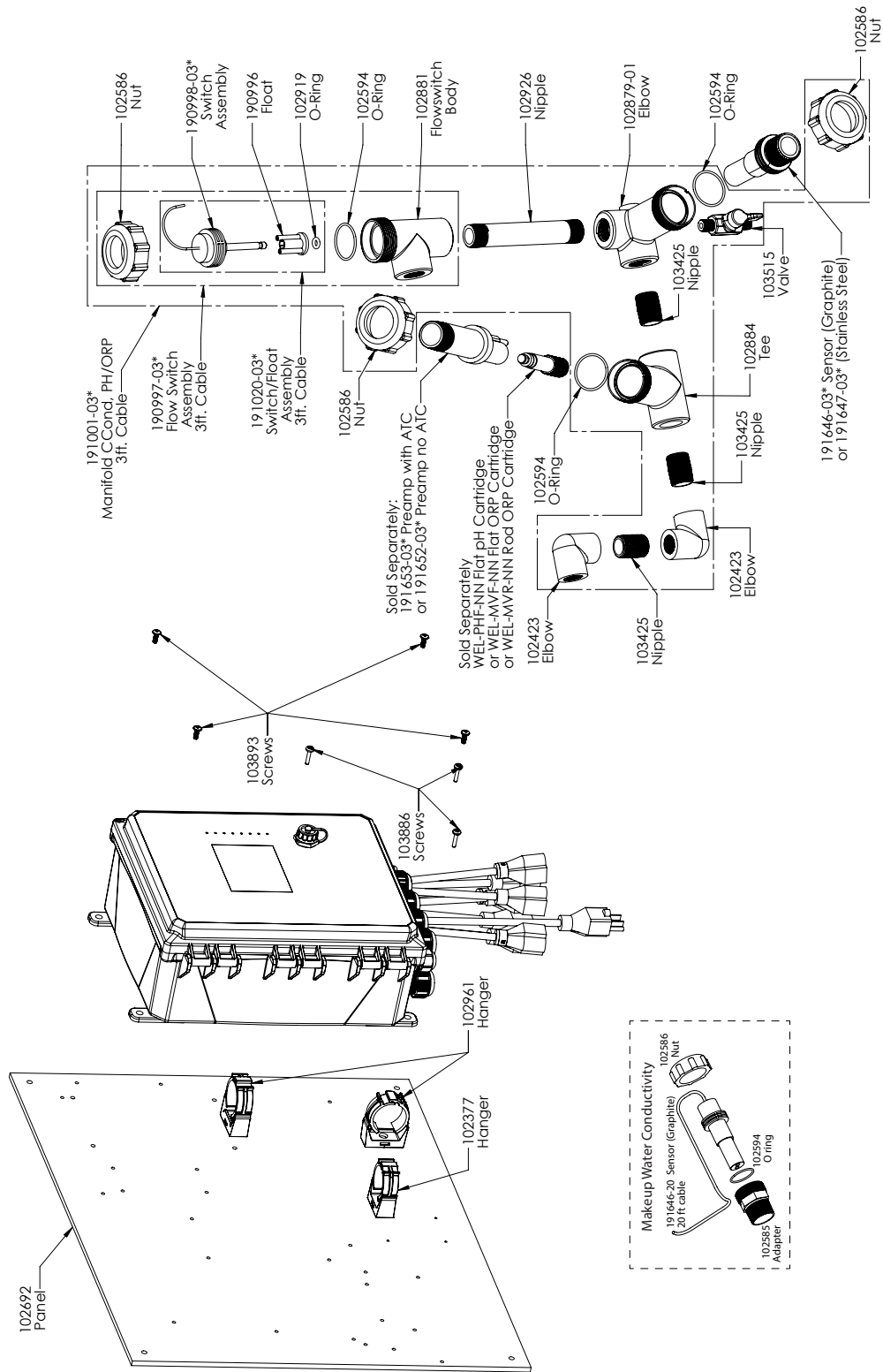
WCT900 Sensor Options PAFNNN, PBFNNN, PAHNNN, PBHNNN, PAINNN, PBINNN

PAFNNN: Graphite contacting conductivity + Flow Switch manifold on panel + WEL-PHF no ATC

PAHNNN: + WEL-MVR PAINNN: + WEL-MVF

PBFNNN: 316SS contacting conductivity + Flow Switch manifold on panel + WEL-PHF no ATC

PBHNNN: + WEL-MVR PBINNN: + WEL-MVF



WCT90 Sensor Options PAEFNN, PBEFNN, PAEHNN, PBEHNN, PAEINN, PBEINN

PAEFNN: Graphite contacting conductivity + Flow Switch manifold on panel

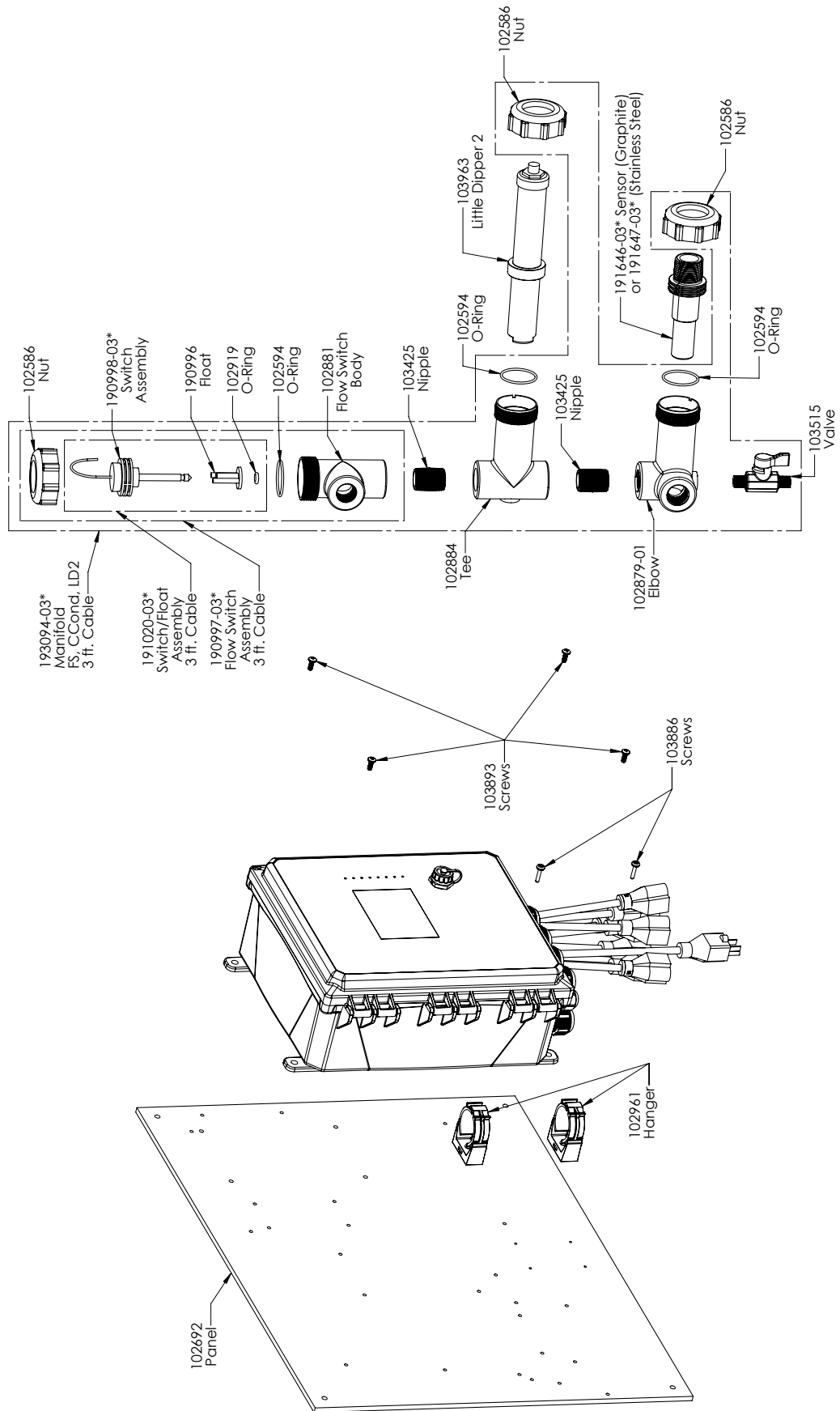
+ Makeup Conductivity+ WEL-PHF no ATC

PAEHNN: + WEL-MVR PAEINN: + WEL-MVF

PBEFNN: 316SS contacting conductivity + Flow Switch manifold on panel

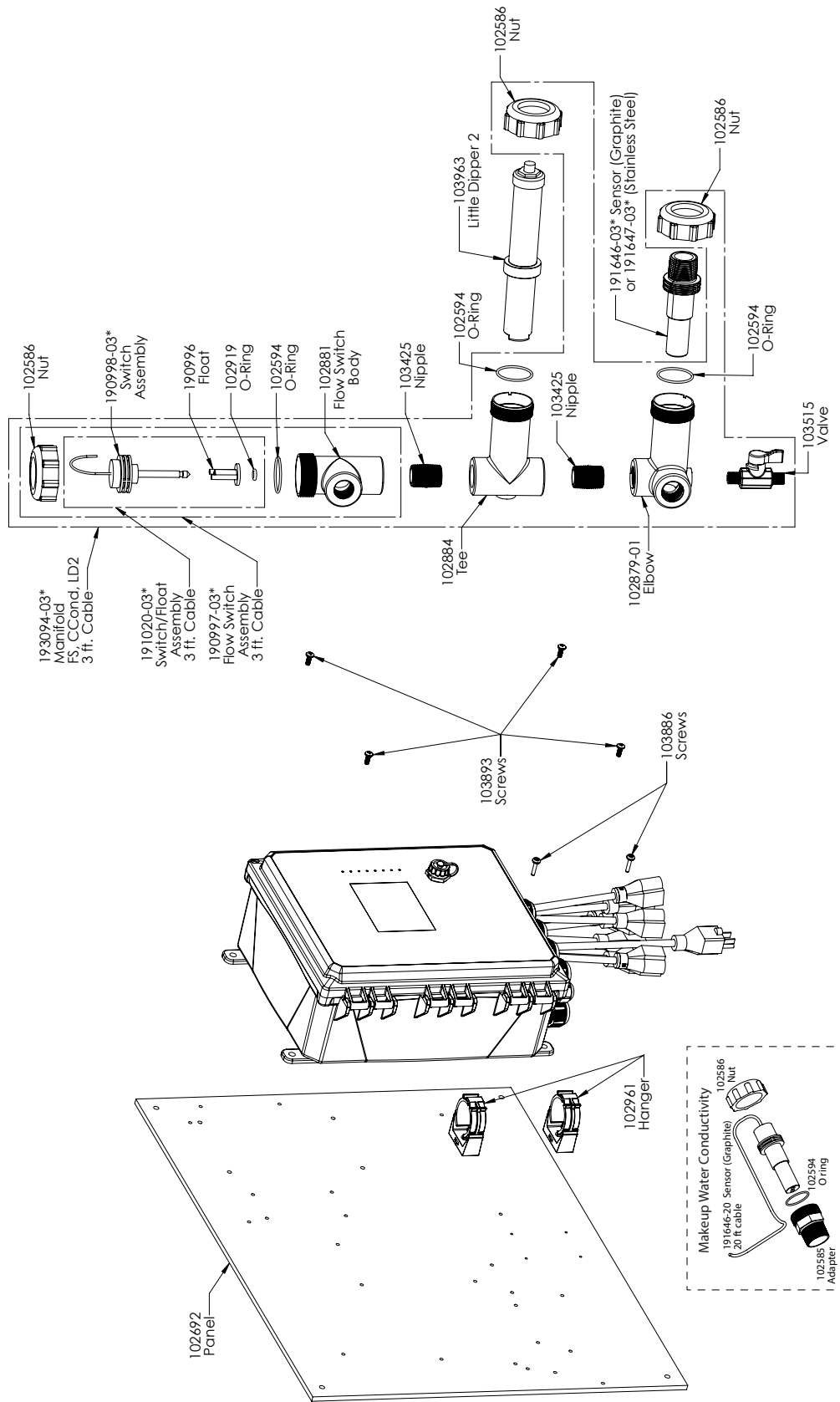
+ Makeup Conductivity + WEL-PHF no ATC

PBEHNN: + WEL-MVR PBEINN: + WEL-MVF



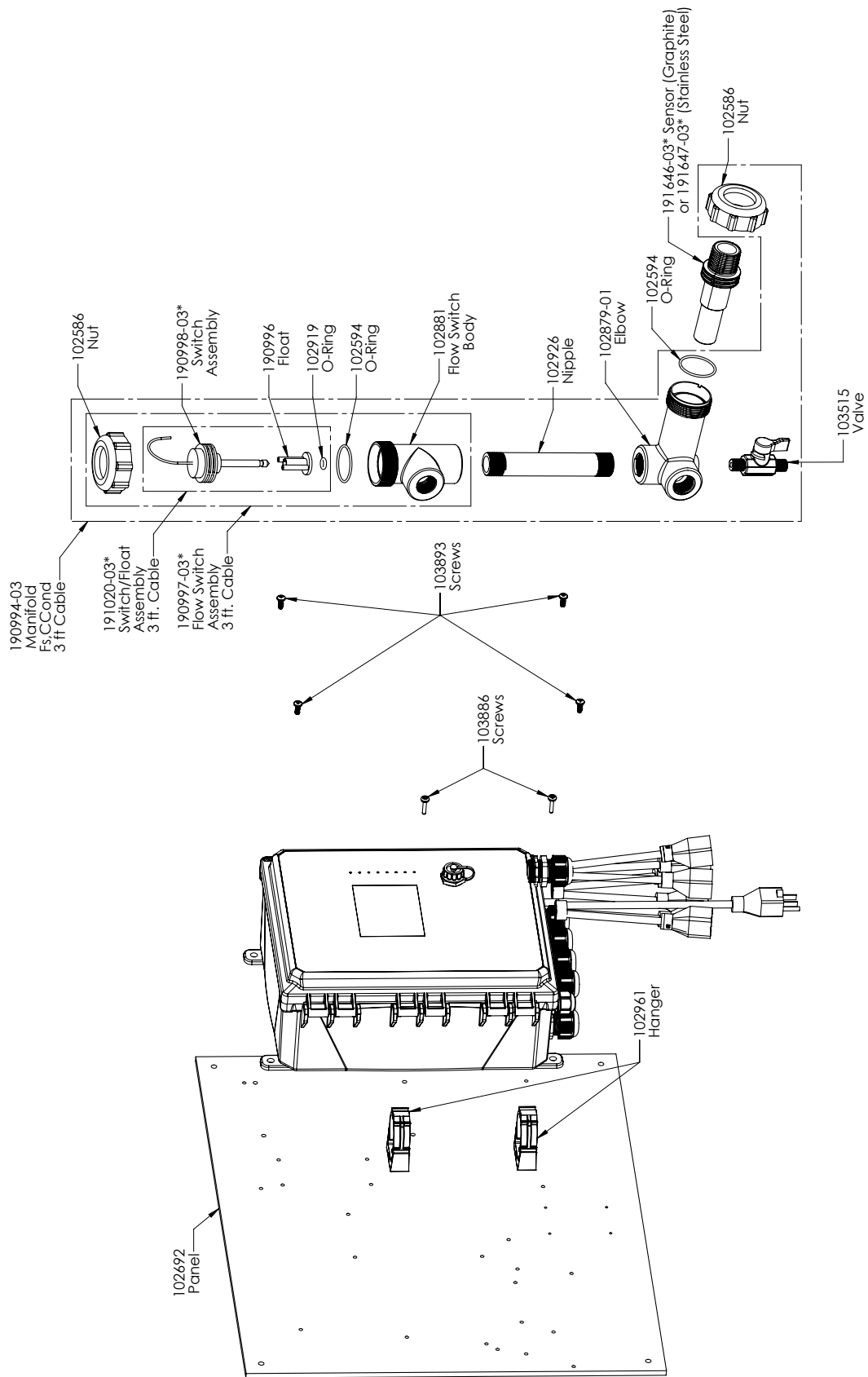
WCT900 Sensor Options PAMNNN, PBMNNN

PAMNNN: Graphite contacting conductivity + Flow Switch manifold on panel + LD2
 PBMNNN: 316SS contacting conductivity + Flow Switch manifold on panel + LD2



WCT90 Sensor Options PAEMNN, PBEMNN

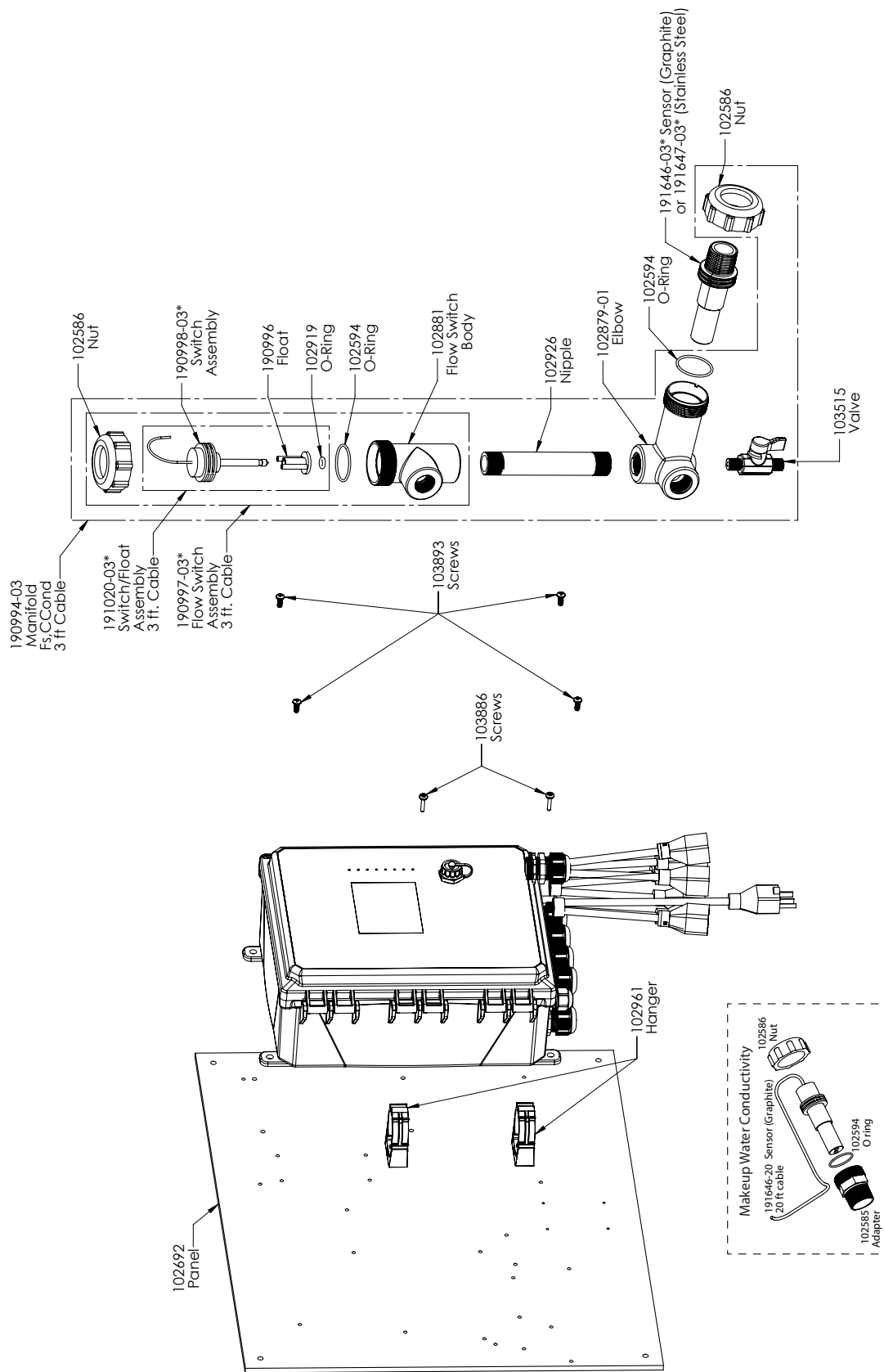
PAEMNN: Graphite contacting conductivity + Flow Switch manifold on panel+ makeup sensor + LD2
 PBMNNN: 316SS contacting conductivity + Flow Switch manifold on panel + makeup sensor + LD2



WCT900 Sensor Options PANNNN, PBNNNN

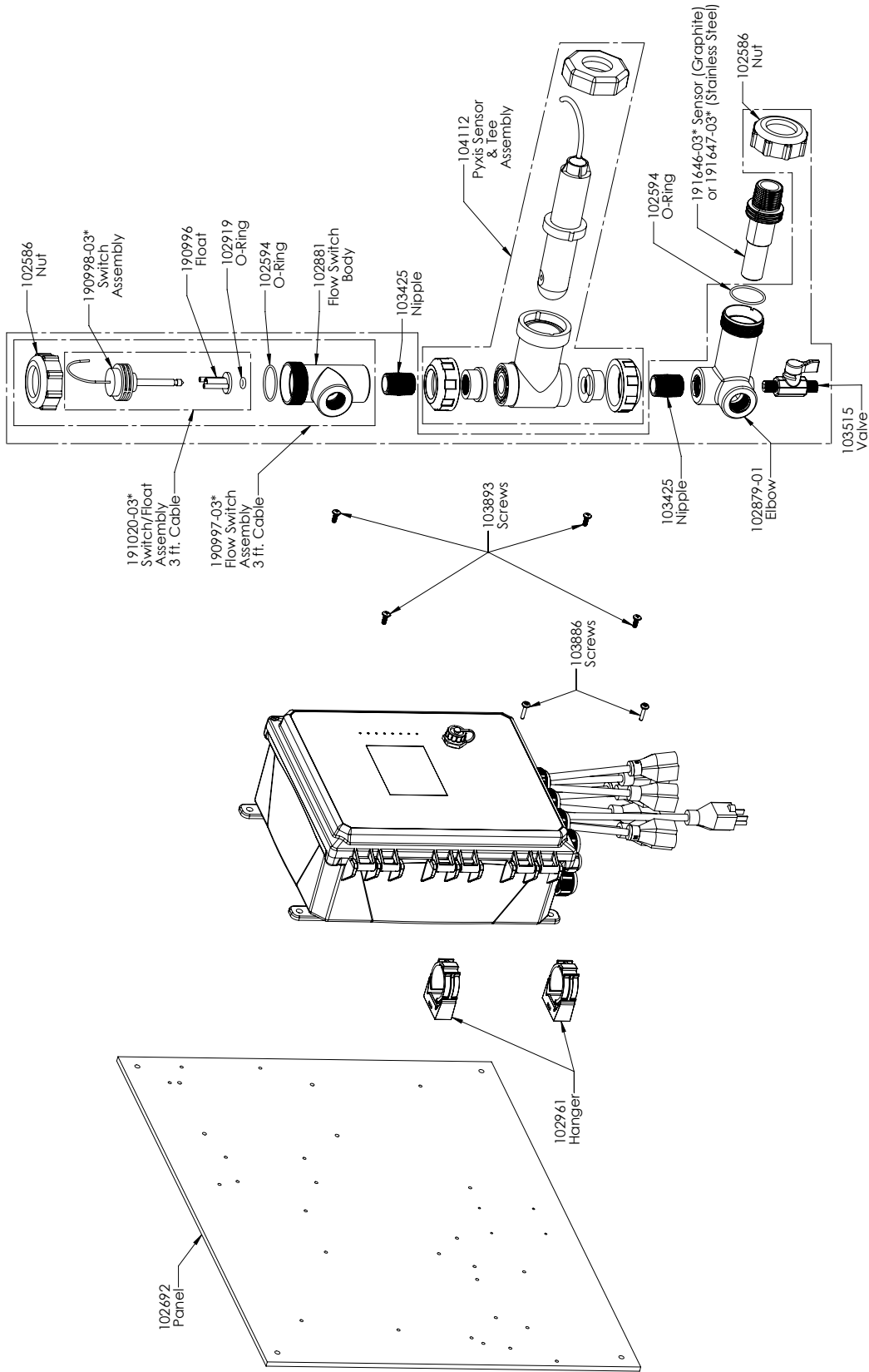
PANNNN: Graphite contacting conductivity + Flow Switch manifold on panel

PBNNNN: 316SS contacting conductivity + Flow Switch manifold on panel



WCT900 Sensor Options PAENNN, PBENNN

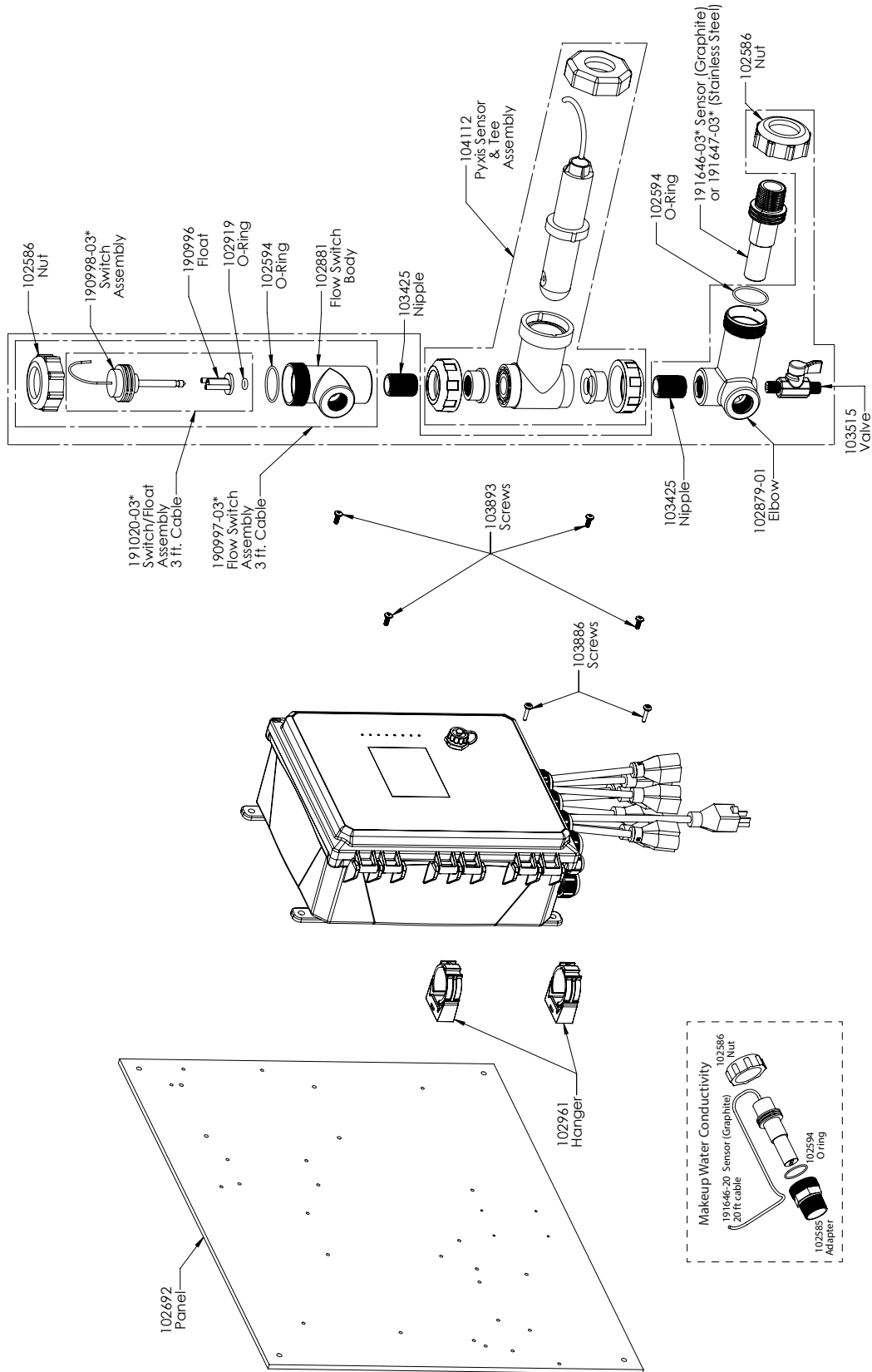
PAENNN: Graphite contacting conductivity + Flow Switch manifold on panel + makeup sensor
 PBENNN: 316SS contacting conductivity + Flow Switch manifold on panel + makeup sensor



WCT900 Sensor Options PAPNNN, PBPNNN

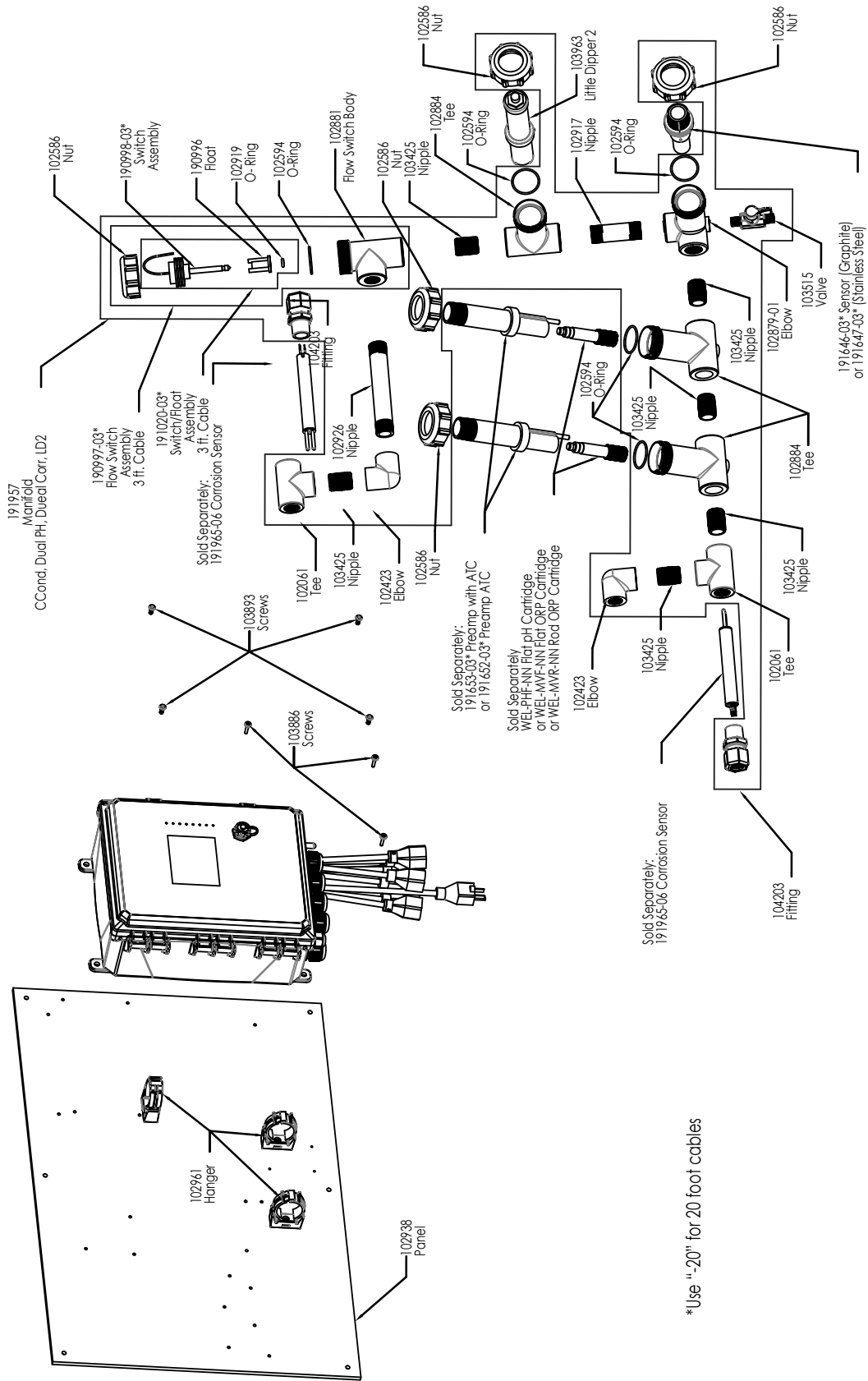
PAPNNN: Graphite contacting conductivity + Flow Switch manifold on panel + Pyxis

PBPNNN: 316SS contacting conductivity + Flow Switch manifold on panel + Pyxis



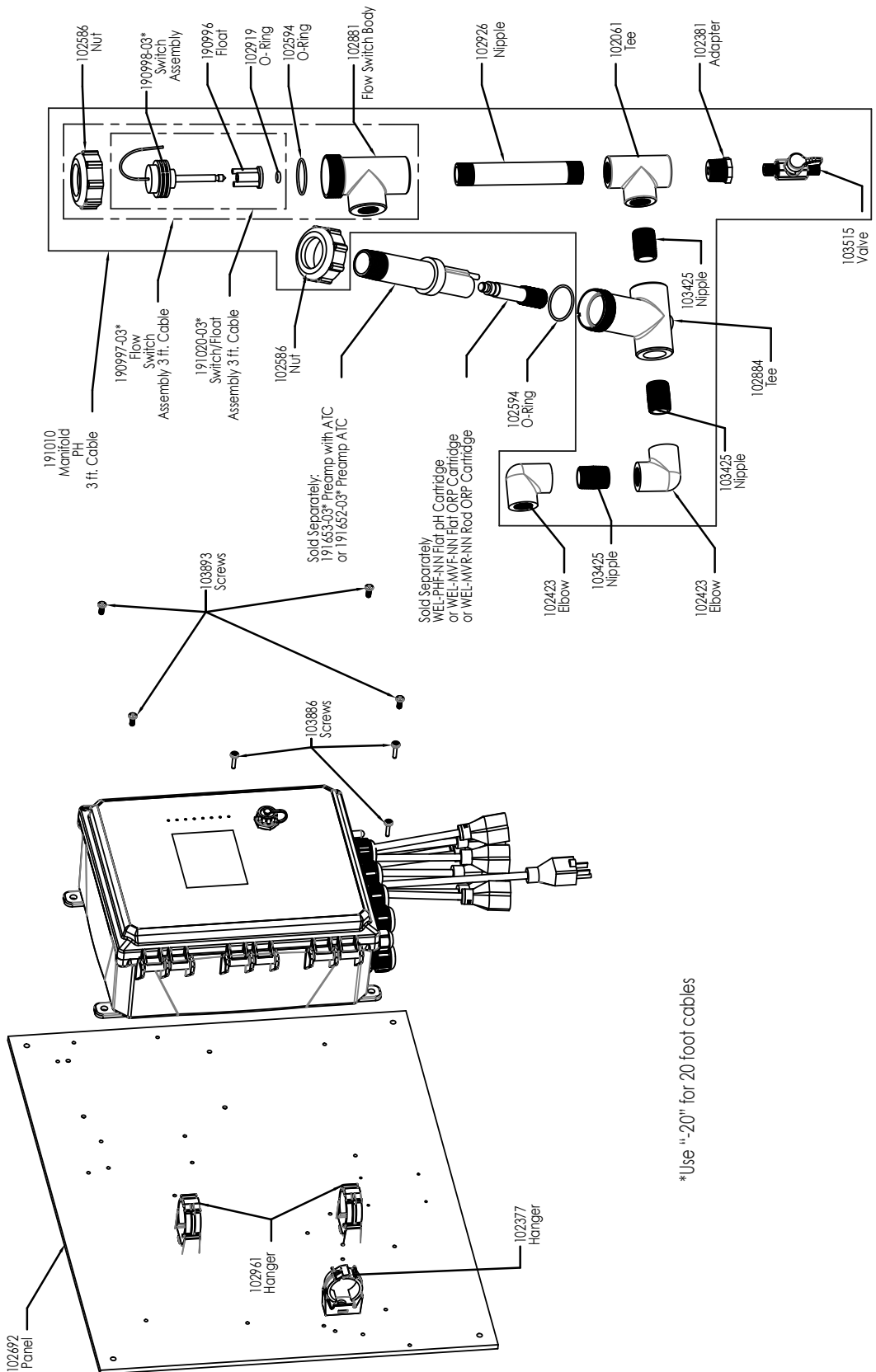
WCT90 Sensor Options PAEPNN, PBEPNN

PAEPNN: Graphite contacting conductivity + Flow Switch manifold on panel + Pyxis + makeup sensor
 PBEPNN: 316SS contacting conductivity + Flow Switch manifold on panel + Pyxis + makeup sensor



WCT900 Sensor Options PAFHMR, PBFHMR, PAFIMR, PBFIMR

- PAFHMR: Graphite contacting conductivity + Flow Switch manifold on panel + WEL-PHF no ATC + Little Dipper 2 + Dual Corrosion + WEL-MVR
- PAFIMR: + WEL-MVF
- PBFHMR: 316SS contacting conductivity + Flow Switch manifold on panel + WEL-PHF no ATC + Little Dipper 2 + Dual Corrosion + WEL-MVR
- PBFIMR: + WEL-MVF



WCT90 Sensor Options PFNNNN, PHNNNN, PINNNN and WIN900 Sensor Option PBNNNN

W900-CT-PFNNNN: Flow Switch manifold on panel + WEL-PHF no ATC

PHNNNN: + WEL-MVR

PINNNN: + WEL-MVF

W900-IN-PBNNNN: Flow Switch manifold on panel + WEL-PHF with ATC