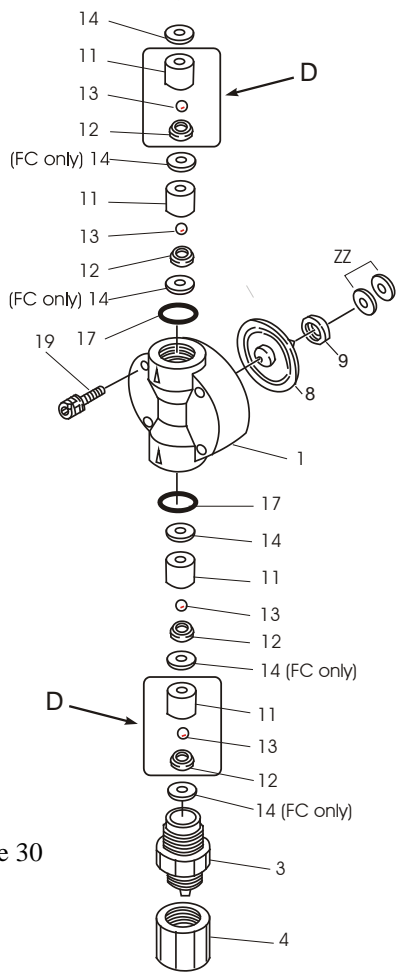
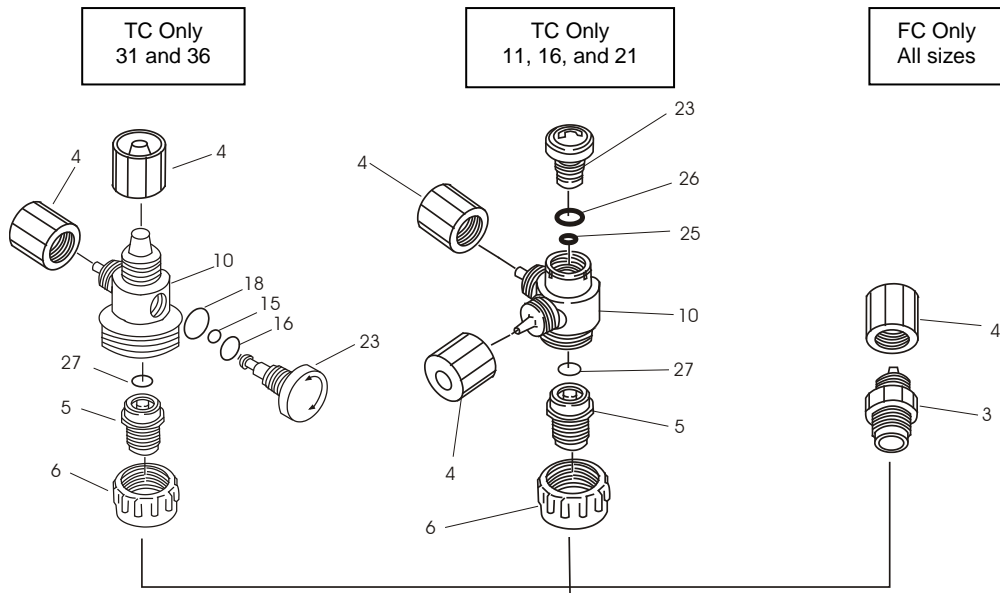


PVDF Liquid End Exploded View

For all PVDF EW and EK Pump Models



- C Entire Head Assembly
- D Valve Cartridge
- E Air Vent Valve

Part numbers for these assemblies are on Page 30

PVDF Liquid End Exploded View

Components

Item	Part No	Description	Qty	Size	Liquid End Material	
1	EH2019	Head, Pump, EW/EKB11, PVDF	1	11	FC, TC	
	EH1970	Head, Pump, EW/EK16, PVDF	1	16	FC, TC	
	EH1965	Head, Pump, EW/EK21, PVDF	1	21	FC, TC	
	EH1966	Head, Pump, EW/EK31, PVDF	1	31	FC, TC	
	EH1967	Head, Pump, EW/EK36, PVDF	1	36	FC, TC	
3	EH0425	Housing, Valve, 3/8 PVDF	2 / 1	11, 16, 21	FC, TC	
	EH0427	Housing, Valve, 1/2 PVDF	2 / 1	31, 36	FC, TC	
4	EH0836	Nut, Coupling, 3/8 PVDF	2 / 3	11, 16, 21	FC, TC	
	EH0837	Nut, Coupling, 1/2 PVDF	2 / 3	31, 36	FC, TC	
5	EH1051	Fitting, Air Vent, PVDF	1	11, 16, 21	TC	
	EH1093	Fitting, Air Vent, PVDF	1	31, 36	TC	
6	EH1047	Nut, Lock, Air Vent, PVDF	1	11, 16, 21	TC	
	EH1092	Nut, Lock, Air Vent, PVDF	1	31, 36	TC	
*	8	EH1971	Diaphragm, EW/EK/EZ11	1	11	all
	EH1972	Diaphragm, EW/EK/EZ16	1	16	all	
	EH1973	Diaphragm, EW/EK/EZ21	1	21	all	
	EH1974	Diaphragm, EW/EK/EZ31	1	31	all	
	EH1975	Diaphragm, EW/EK/EZ36	1	36	all	
*	9	EH0059	Retainer, EW/EK/EZ11	1	11	all
	EH0083	Retainer, EW/EK/EZ16	1	16	all	
	EH0067	Retainer, EW/EK/EZ21	1	21	all	
	EH0087	Retainer, EW/EK/EZ31	1	31	all	
	EH0158	Retainer, EW/EK/EZ36	1	36	all	
10	EH1052	Body, Manual Air Vent, PVDF	1	11, 16, 21	TC	
	EH1100	Body, Manual Air Vent, PVDF	1	31, 36	TC	
*	11	EH0340	Guide, Valve, 0.188 PVDF	4	11	FC
	EH1046	Guide, Valve, 0.188 PVDF	4	11	TC	
	EH1549	Guide, Valve, 0.250 PVDF	4	16, 21	FC, TC	
	EH0352	Guide, Valve, 0.375 PVDF	4	31, 36	FC	
	EH2368	Guide, Valve, 0.375 PVDF (EW/EWN)	4	31, 36	TC	
*	12	EH1627	Seat, Valve, 0.188 PCTFE	4	11	TC
	EH0592	Seat, Valve, 0.250 PCTFE	4	16, 21	FC	
	EH0593	Seat, Valve, 0.375 PCTFE	4	31, 36	FC	
	EH0061	Seat, Valve, 0.188 FKM	4	11	TC	
	EH0069	Seat, Valve, 0.250 FKM	4	16, 21	TC	
	EH0119	Seat, Valve, 0.375 FKM	4	31, 36	TC	
*	13	EH0025	Ball, Valve, 0.188 CE	4	11	FC, TC
	EH0084	Ball, Valve, 0.250 CE	4	16, 21	FC, TC	
	EH0120	Ball, Valve, 0.375 CE	4	31, 36	FC, TC	
*	14	EH0342	Gasket, Valve, 0.188 & 0.250 PTFE	6	11, 16, 21	FC
	EH1553	Gasket, Valve, 0.188 & 0.250 PTFE	2	11, 16, 21	TC	
	EH0354	Gasket, Valve, 0.375, PTFE	6	31, 36	FC	
	EH0121	Gasket, Valve, 0.375, PTFE	2	31, 36	TC	
*	15	EH1080	O-Ring, P-3, FKM	1	31, 36	TC
*	16	EH0029	O-Ring, P-6, FKM	1	31, 36	TC
*	17	EH0027	O-Ring, S-14, FKM	2	11, 16, 21	TC
	EH0122	O-Ring, P-16, FKM	2	31, 36	TC	
	EH0591	Gasket, V-Housing, 0.188/0.250 PTFE	2	11, 16, 21	FC	
	EH0355	Gasket, V-Housing, 0.375 PTFE	2	31, 36	FC	
*	18	EH0027	O-Ring, S-14, FKM	1	31, 36	TC
19	EH1986	Bolt, M4 x 35 w/PW & SW, 316SS	4	11, 16, 21, 31	FC, TC	
	EH1988	Bolt, M5 x 35 w/PW & SW, 316SS	4	36	FC, TC	
23	EH1049	Knob, Air Vent Valve	1	11, 16, 21	FC, TC	
	EH1094	Knob, Air Vent, 1/2, PVDF	1	31, 36	FC, TC	
*	25	EH0300	O-Ring, P-4, FKM	1	11, 16, 21	TC
*	26	EH0302	O-Ring, P-10A, FKM	1	11, 16, 21	TC
*	27	EH0304	O-Ring, P-7, FKM	1	11, 16, 21	TC
	EH1082	O-Ring, P-11, FKM	1	31, 36	TC	
ZZ	-----	Brass spacers	Drive specific/Re-use when replacing diaphragm			
*	Included in spare parts kit					