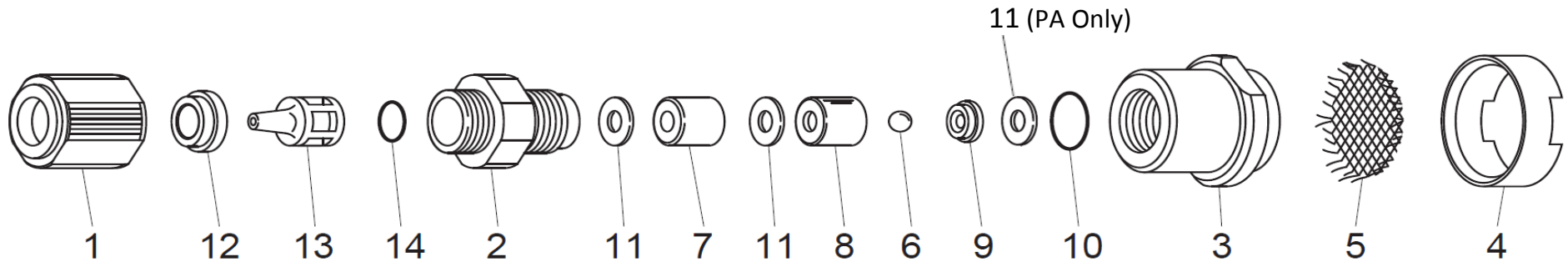




FSN-PVC/GFRPP Series Foot Valves 3/8" Tubing Exploded View



3/8" Tubing Connections

Item	Qty	Description	Material	FSVCN-7U	FSVEN-7U	FSVFN-7U
				Part ID	Part ID	Part ID
1	1	Nut, Coupling, FLEXCON, 09-36	PVC	EH2330	EH3091	EH3091
2	1	Housing, Valve, FLEXCON, 3/8"	PVC	EH2328	EH2328	EH2328
3	1	Body, Foot Valve, FSN Series, 3/8"	PVC	EH1024	EH1024	EH1024
4	1	Retainer, Strainer, FSN Series	PVC	EH1025	EH1025	EH1025
5	1	Strainer, Foot Valve, ETFE	ETFE	EH1028	EH1028	EH1028
6	1	Ball, Valve, 0.250"	CE	EH0084	EH0084	---
			PTFE	---	---	E00064
7	1	Spacer, Foot Valve, 3/8"	PVC	EH1026	EH1026	EH1026
8	1	Guide, Valve, 0.250"	PVC	EH0068	EH0068	EH0068
9	1	Seat, Valve, 0.250"	FKM	EH0069	---	---
			EPDM	---	EH0071	EH0071
			---	---	---	---
10	1	O-Ring, S14	FKM	EH0027	---	---
			EPDM	---	EH0050	EH0050
			---	---	---	---
11	2	Gasket, Valve, 0.188" & 0.250"	PTFE	EH0026	EH0026	EH0026
12	1	Clamp, Tubing, FSN, FLEXCON, 3/8"	PVC	EH3093	EH3093	EH3093
13	1	Adapter, Tubing, FLEXCON, 3/8"	PVC	EH2339	EH2339	EH2339
14	1	O-Ring, P9	FKM	EH2341	---	---
			EPDM	---	EH1585	EH1585
			---	---	---	---

Material	FSPCN-7U	FSPEN-7U	FSPAN-7U
	Part ID	Part ID	Part ID
GFRPP	EH2351	EH2351	EH2351
GFRPP	EH2349	EH2349	EH2349
GFRPP	EH1031	EH1031	EH1031
GFRPP	EH1032	EH1032	EH1032
ETFE	EH1028	EH1028	EH1028
CE	EH0084	EH0084	EH0084
PTFE	---	---	---
GFRPP	EH1033	EH1033	EH1033
GFRPP	EH1534	EH1534	EH1534
FKM	EH0069	---	---
EPDM	---	EH0071	---
PCTFE	---	---	EH2416
FKM	EH0027	---	---
EPDM	---	EH0050	---
AFLAS	---	---	E00179
PTFE	EH0026	EH0026	EH0026 (qty3)
GFRPP	EH3094	EH3094	EH3094
GFRPP	EH2356	EH2356	EH2356
FKM	EH2341	---	---
EPDM	---	EH1585	---
AFLAS	---	---	E00178

†NOTE: For NPT style Foot Valves, ITEMS #1, #12, #13 & #14 are not used, and #2 is changed out with NPT fitting. Contact Customer Service for #2 part number.