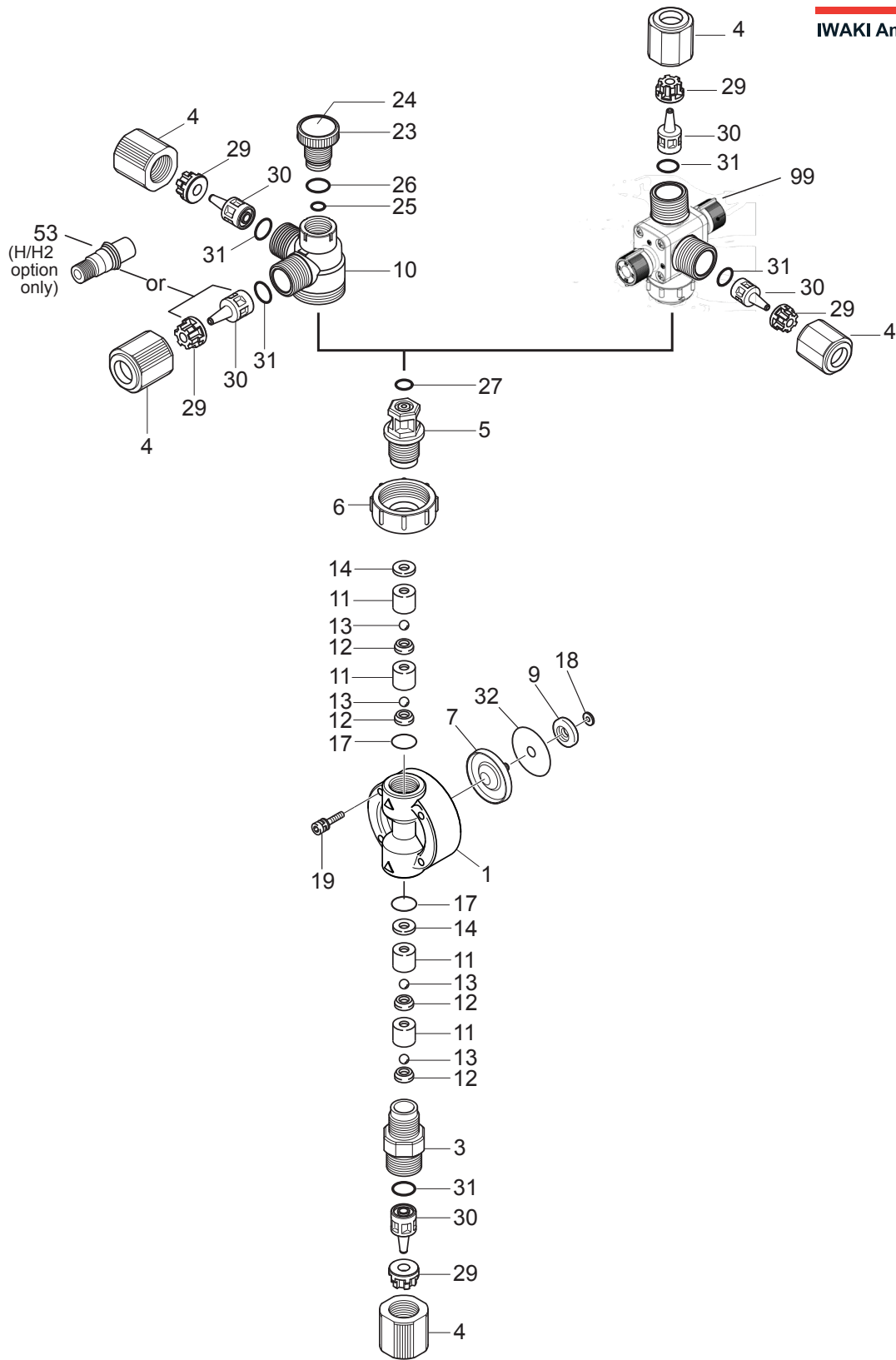


EWN/EK/EJ 11-36 PVC / GFRPP Standard Exploded View & HP/MFV

W A L C H E M

IWAKI America Inc.



EWN/EK/EJ 11-36 PVC/GFRPP Standard Exploded View & HP/MFV Components

Item	Part#	Description	Qty	Material	Size	Liquid End Material
1	EH2015	Pump Head	1	PVC	B11	VC, VE
	EH1950		1	PVC	B16 / C16	VC, VE
	EH1951		1	PVC	B21 / C21	VC, VE
	EH1960		1	PVC	B31 / C31	VC, VE
	EH1953		1	PVC	C36	VC, VE
	EH2017		1	GFRPP	B11	PC, PA, PE
	EH2124		1	GFRPP	B11H	PCH, PAH, PEH
	EH1957		1	GFRPP	B16 / C16 / C16H	PC, PA, PE, PCH, PAH, PEH
	EH1958		1	GFRPP	B21 / C21	PC, PA, PE
	EH1961		1	GFRPP	B31 / C31	PC, PA, PE
3	EH1962		1	GFRPP	C36	PC, PA, PE
	EH2328	Housing, Valve (Suction)	1	PVC	B11,16,21 / C16,21	VC, VE
	EH2329		1	PVC	B31 / C31,36	VC, VE
	EH2349		1	GFRPP	B11,16,21 / C16,21 / B11H / C16H	PC, PA, PE, PCH, PAH, PEH
	EH2350		1	GFRPP	B31 / C31,36	PC, PA, PE, PCH, PAH, PEH
4	EH2330	Coupling Nut	3	PVC	B11,16,21,31 / C16,21,31,36	VC, VE
	EH2351		3	GFRPP	B11,16,21,31 / C16,21,31,36 / B11H / C16H	PC, PA, PE, PCH, PAH, PEH
5	EH2331	Fitting, MAVV	1	PVC	B11,16,21 / C16,21	VC, VE
	EH2332		1	PVC	B31 / C31,36	VC, VE
	EH2352		1	GFRPP	B11,16,21 / C16,21 / B11H / C16H	PC, PA, PE, PCH, PAH, PEH
	EH2353		1	GFRPP	B31 / C31,36	PC, PA, PE
6	EH2333	Lock Nut, MAVV	1	PVC	B11,16,21,31 / C16,21,31,36	VC, VE
	EH2354		1	GFRPP	B11,16,21,31 / C16,21,31,36 / B11H / C16H	PC, PA, PE, PCH, PAH, PEH
*7	EH1971	Diaphragm	1	PTFE+EPDM	B11	ALL
	EH1972		1	PTFE+EPDM	B16 / C16	ALL
	EH1973		1	PTFE+EPDM	B21 / C21	ALL
	EH1974		1	PTFE+EPDM	B31 / C31 / C31V	ALL
	EH1975		1	PTFE+EPDM	C36	ALL
*9	EH0059	Retainer	1	PPS+GF	B11	VC, VE, PC, PA, PE
	EH0083		1	PPS+GF	B16 / C16	VC, VE, PC, PA, PE
	EH0067		1	PPS+GF	B21 / C21	VC, VE, PC, PA, PE
	EH0087		1	PPS+GF	B31 / C31 / C31V	VC, VE, PC, PA, PE, P6
	EH0158		1	PPS+GF	C36	VC, VE, PC, PA, PE
	EH0751		1	SUS	B11H	PCH, PAH, PEH
10	EH0755		1	SUS	C16H	PCH, PAH, PEH
	EH2334	Body, MAVV	1	PVC	B11,16,21,31 / C16,21,31,36	VC, VE
	EH2355		1	GFRPP	B11,16,21,31 / C16,21,31,36 / B11H / C16H	PC, PA, PE, PCH, PAH, PEH
*11	EH0060	Guide, Valve	4	PVC	B11 / B09,11C	VC, VE
	EH0068		4	PVC	B16,21 / C16,21	VC, VE
	EH0118		4	PVC	B31 / C31,36	VC, VE
	EH0318		4	GFRPP	B11 / B11H	PC, PA, PE, PCH, PAH, PEH
	EH1534		4	GFRPP	B16,21 / C16,21 / C16H	PC, PA, PE, PCH, PAH, PEH
	EH0332		4	GFRPP	B31 / C31,36	PC, PA, PE
*12	EH0061	Seat, Valve	4	FKMA	B11 / B11H	VC, PC, PCH
	EH0069		4	FKMA	B16,21 / C16,21 / C16H	VC, PC, PCH
	EH0119		4	FKMA	B31 / C31,36	VC, PC
	EH0048		4	EPDM	B11 / B11H	VE, PE, PEH
	EH0071		4	EPDM	B16,21 / C16,21 / C16H	VE, PE, PEH

EWN/EK/EJ 11-36 PVC/GFRPP Standard Exploded View & HP/MFV Components (continued)

Item	Part#	Description	Qty	Material	Size	Liquid End Material
	EH0125		4	EPDM	B31 / C31,36	VE, PE
	EH2415		4	PCTFE	B11 / B11H	PA, PAH
	EH2416		4	PCTFE	B16,21 / C16,21/ C16H	PA, PAH
	EH0593		4	PCTFE	B31 / C31,36	PA, PA
*13	EH0025	Ball, Valve	4	CE	B11 / B11H	VC, VE, PC, PA, PE, PCH,PEH,PAH
	EH0084		4	CE	B16,21 / C16,21 / C16H	VC, VE, PC, PA, PE, PCH,PEH,PAH
	EH0120		4	CE	B31 / C31,36	VC, VE, PC, PA, PE
*14	EH0026	Gasket, Valve	2	PTFE	B11,16,21 /C16,21	VC, VE
	EH0026		6	PTFE	B11,16,21 /C16,21 / B11H / C16H	PA, PAH
	EH0121		2	PTFE	B31 / C31,36	VC, VE, PC, PE
	EH0121		6	PTFE	B31 / C31,36	PA
	EH2178		2	PTFE	B11 / B11H / C16H	PC, PE, PCH, PEH
	EH0580		2	PTFE	B16,21 / C16,21	PC, PH, PE
*17	EH0027	O-Ring, S14	2	FKMA	B11,16,21 /C16,21 / B11H /C16H	VC, PC, PCH
	EH0050		2	EPDM	B11,16,21 /C16,21 / B11H /C16H	VE, PE, PEH
	E00179		2	AFLAS	B11,16,21 /C16,21 / B11H /C16H	PA, PAH
*17	EH0122	O-Ring, P16	2	FKMA	B31 / C31,36	VC, PC
	EH0127		2	EPDM	B31 / C31,36	VE, PE
	E00201		2	AFLAS	B31 / C31,36	PA
19	EH1986	Bolt, Hex Soc. w/washers	4	M4X35 316SS	B11,16,21,31 / C16,21,31 / B11H / C16H	VC, VE, PC, PA, PE, PCH,PEH,PAH
	EH1988		4	M5X35 316SS	C36	VC, VE, PC, PA, PE
23	EH0299	Knob, MAVV	1	PVC	B11,16,21,31 / C16,21,31,36	VC, VE
	EH0321		1	GFRPP	B11,16,21,31 / C16,21,31,36 / B11H / C16H	PC, PA, PE, PCH, PAH, PEH
24	EH1314	Label, MAVV Knob	1		B11,16,21,31 / C16,21,31,36 / B11H / C16H	ALL
*25	EH0300	O-Ring, P4	1	FKMA	B11,16,21,31 / C16,21,31,36 / B11H / C16H	VC, PC, PCH
	EH0301		1	EPDM	B11,16,21,31 / C16,21,31,36 / B11H / C16H	VE, PE, PEH
	E00176		1	AFLAS	B11,16,21,31 / C16,21,31,36 / B11H / C16H	PA, PAH
*26	EH0302	O-Ring, P10A	1	FKMA	B11,16,21,31 / C16,21,31,36 / B11H / C16H	VC, PC, PCH
	EH0303		1	EPDM	B11,16,21,31 / C16,21,31,36 / B11H / C16H	VE, PE, PEH
	E00174		1	AFLAS	B11,16,21,31 / C16,21,31,36 / B11H / C16H	PA, PAH
*27	EH2335	O-Ring, P10	1	FKMA	B11,16,21,31 / C16,21,31,36 / B11H / C16H	VC, PC, PCH
	EH2336		1	EPDM	B11,16,21,31 / C16,21,31,36 / B11H / C16H	VE, PE, PEH
	E00173		1	AFLAS	B11,16,21,31 / C16,21,31,36 / B11H / C16H	PA, PAH
*29	EH2337	Clamp Ring, 3/8" OD	3 (2)	PPS+GF	B11,16,21 / C16,21 (B11H / C16H)	VC, VE, PC, PA, PE (PCH,PAH,PEH)
	EH2338	Clamp Ring, 1/2" OD	3	PPS+GF	B31 / C31,36	VC, VE, PC, PA, PE
*30	EH2339	Adapter,Tubing, 3/8"OD	3	PVC	B11,16,21 / C16,21	VC, VE
	EH2356		3 (2)	GFRPP	B11,16,21 / C16,21 (B11H / C16H)	PC, PA, PE (PCH, PAH, PEH)
	EH2340	Adapter, Tubing, 1/2"OD	3	PVC	B31 / C31,36	VC, VE
	EH2357		3	GFRPP	B31 / C31,36	PC, PA, PE
*31	EH2341	O-Ring, P9	3	FKMA	B11,16,21,31 / C16,21,31,36 / B11H / C16H	VC, PC, PCH
	EH1585		3	EPDM	B11,16,21,31 / C16,21,31,36 / B11H / C16H	VE, PE, PEH
	E00178		3	AFLAS	B11,16,21,31 / C16,21,31,36 / B11H / C16H	PA, PAH
*32	EH0752	Gasket, Diaph/Retainer	1	PTFE	B11H / C16H	PCH, PAH, PEH
53	EH2379-PP	Adapter, 1/4"MNPT	1	PP	B11H / C16H	PCH, PAH, PEH
18	-----	Brass Spacers	--	Brass	Drive Specific. Reuse with Dia. change	ALL
99	MFV-HTC-7	Multi-Function Valve	1	PVDF/PTFE/AFLAS	B11,16 / C16,21	xxM
	MFV-MTC-7		1	PVDF/PTFE/AFLAS	B21	xxM
	MFV-MTC-8		1	PVDF/PTFE/AFLAS	C31	xxM
	MFV-LTC-8		1	PVDF/PTFE/AFLAS	B31 / C36	xxM