

WALCHEM

IWAKI America Inc.

GPRS Modem Option Installation

***WebMaster*[®] / *WebAlert*[®]**
GPRS Modem Option
Installation Manual

Notice

© 2014 WALCHEM, Iwaki America Inc. (hereinafter "Walchem")
Five Boynton Road, Holliston, MA 01746 USA
(508) 429-1110
All Rights Reserved
Printed in USA

Proprietary Material

The information and descriptions contained herein are the property of WALCHEM. Such information and descriptions may not be copied or reproduced by any means, or disseminated or distributed without the express prior written permission of WALCHEM, Five Boynton Road, Holliston, MA 01746.

Statement of Limited Warranty

WALCHEM warrants equipment of its manufacture, and bearing its identification to be free from defects in workmanship and material for a period of 24 months for electronics and 12 months for mechanical parts and electrodes from date of delivery from the factory or authorized distributor under normal use and service and otherwise when such equipment is used in accordance with instructions furnished by WALCHEM and for the purposes disclosed in writing at the time of purchase, if any. WALCHEM's liability under this warranty shall be limited to replacement or repair, F.O.B. Holliston, MA U.S.A. of any defective equipment or part which, having been returned to WALCHEM, transportation charges prepaid, has been inspected and determined by WALCHEM to be defective. Replacement elastomeric parts and glass components are expendable and are not covered by any warranty.

THIS WARRANTY IS IN LIEU OF ANY OTHER WARRANTY, EITHER EXPRESS OR IMPLIED, AS TO DESCRIPTION, QUALITY, MERCHANTABILITY, and FITNESS FOR ANY PARTICULAR PURPOSE OR USE, OR ANY OTHER MATTER.

P/N 180305.G
Feb 2015

1.0 Introduction

The GPRS modem option provides remote communications with any USB-style WebMaster® or WebAlert™ controller, using the VTouch server. This permits changing of set points, downloading of data files, emailing of reports, and alarm notification.

The user must obtain an **unlimited data usage** GPRS account from a local cell service provider, receive a SIM card, and install this in the modem. An activation key for the service is provided by Walchem to allow use of the server. Walchem offers the GPRS service, pre-programmed, or the user may obtain an account elsewhere.

Once the controller is programmed correctly it will connect to our VTouch server using a secure connection over the Internet. This connection will be dropped and restored on a regular basis throughout the day as a further security measure. It will not be connected to the Internet at the same IP address for very long.

When you want to connect live to the controller, simply log onto our VTouch server, click on the Live Connect icon, and you will be instantly connected to the controller. Its unique user name and password are required to enter the controller.

The GPRS cell service is a data only plan. The modem is not capable of answering a phone call, and therefore modem-to-modem communications is not possible as it is with the landline modem option.

2.0 WebMaster Installation



CAUTION! There are live circuits inside the controller even when the power switch on the front panel is in the OFF position! The front panel must never be opened before power to the controller is REMOVED!

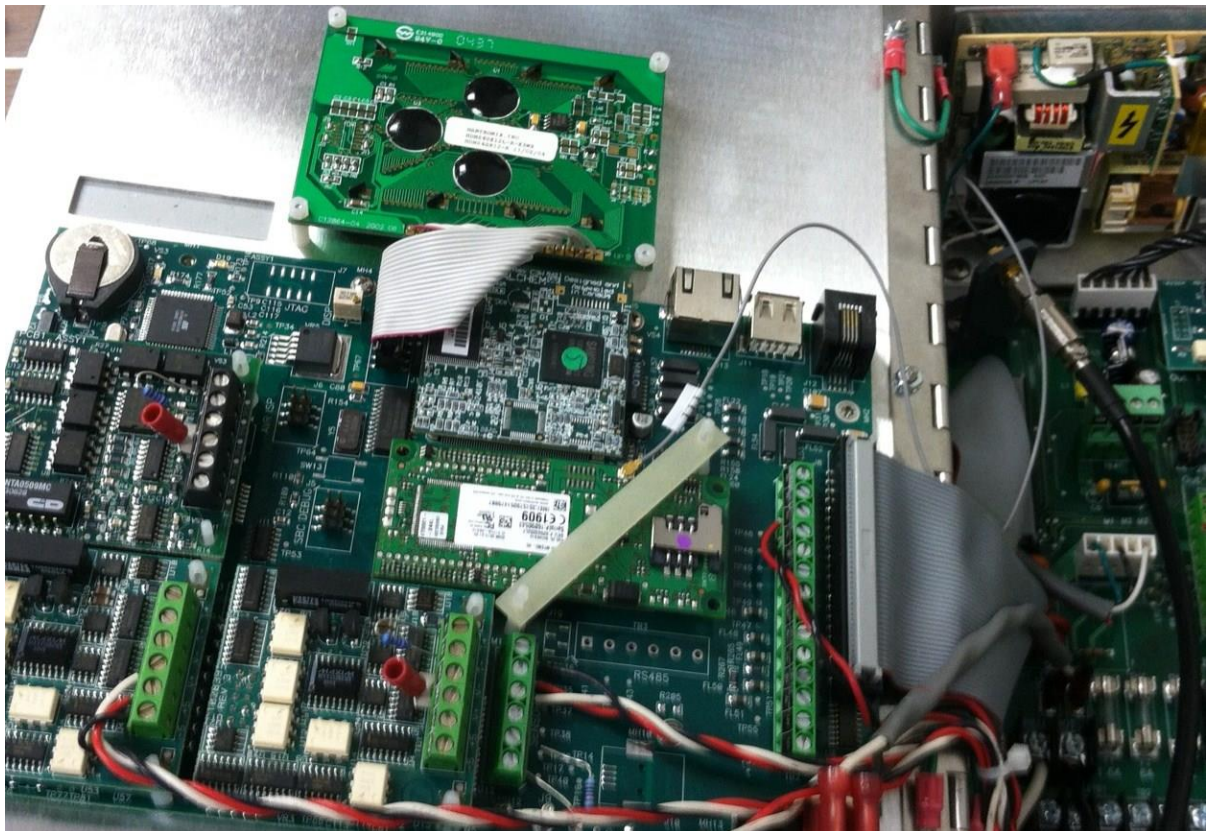
If your controller is prewired, it is supplied with a 10 foot, 14 AWG power cord with USA style plug and 8 inch, 18 AWG USA style receptacle cords for the powered relay outputs. A tool (#1 Phillips screwdriver) is required to open the front panel.

1. Plug the modem into the connector oriented as shown below, taking care not to bend or break any pins
2. Use the 103271 truss to hold the modem in place
3. Insert the SIM card into the slot as shown below. The notched corner must be oriented as shown, on the bottom right-hand side. Never insert or remove the SIM card with power connected, as this can damage the SIM card!

SIM Card Installation



4. Run the coaxial antenna cable into the controller through a watertight strain relief.
5. Install the plastic bracket on the corner of the relay board
6. Mount the 103786 SMA to UFL cable to the plastic bracket.
7. Thread the SMA connector on the antenna cable onto the SMA connector on the 103786 cable.
8. Snap the small end of the 103786 cable into the UFL connector of the modem labeled "M" (of the two connectors on the upper right corner of the modem, it's the one on the left). Do NOT use the connector labeled "A"!



Cable Installation

3.0 WebAlert Installation

1. Plug the modem into the connector oriented as shown below, taking care not to bend or break any pins
2. Use the 103271 truss to hold the modem in place
3. Insert the SIM card into the slot as shown below. The notched corner must be oriented as shown, on the bottom right-hand side. Never insert or remove the SIM card with power connected, as this can damage the SIM card!
4. Run the coaxial antenna cable into the controller through a watertight strain relief.
5. Install the plastic bracket on the corner of the process monitor board using the supplied screw.
6. Mount the 103786 SMA to UFL cable to the plastic bracket.
7. Thread the SMA connector on the antenna cable onto the SMA connector on the 103786 cable.
8. Snap the small end of the 103786 cable into the UFL connector of the modem labeled "M" (of the two connectors on the upper right corner of the modem it's the one on the left). Do NOT use the connector labeled "A"!

