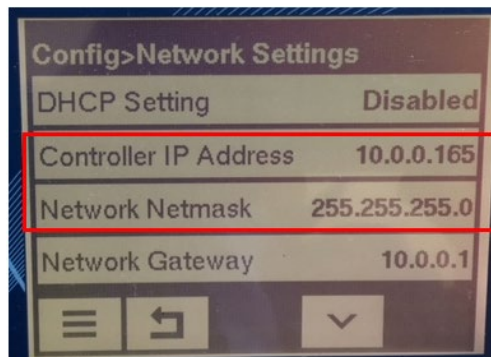
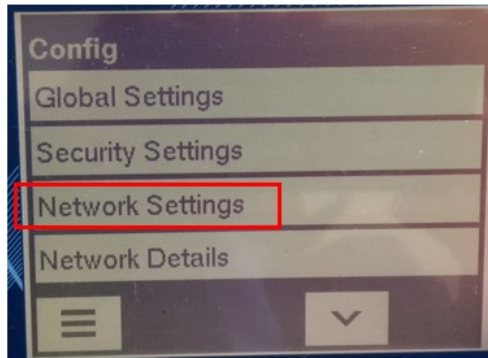
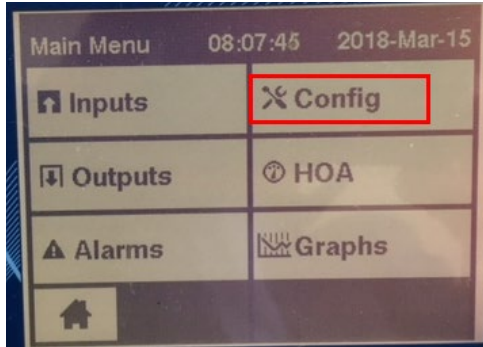




Connecting to W600/W900 via Direct Ethernet

Controller Settings

Go to Config menu, then to Network Settings to see the controller Ethernet settings.



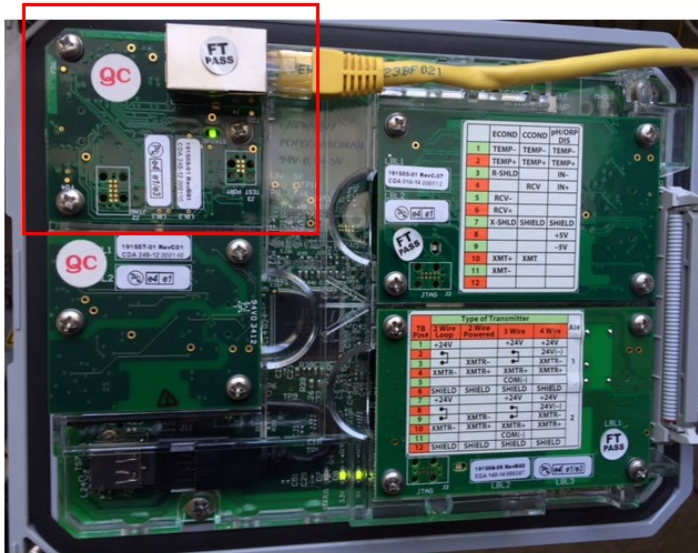
In the above example, the Controller IP and Netmask Addresses are 10.0.0.165 and 255.255.255.0, respectively. This is only an example. For the direct Ethernet connection from the controller to a computer, the Gateway is not needed.

Please Note: Your controller IP addresses may be different. That's OK. To determine what your controller IP addresses are, using the controller **Touchscreen**, go to the **Main Menu**, then to the **Config Menu**, then to **Network (Ethernet) Settings**, and you will see exactly what these IP Addresses are. Write them down.

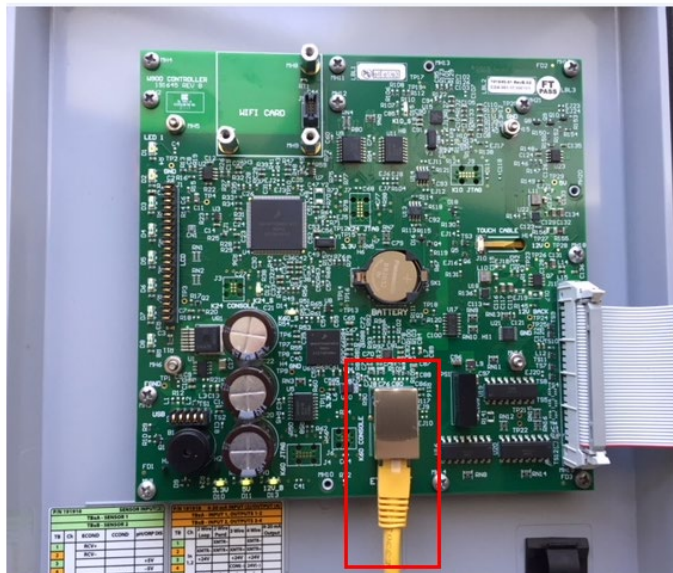


Physical Ethernet cable connection from the controller to the computer

Ethernet is optional in a W600 controller. Open the controller front door, and on the backside, upper left hand corner, you will find the Ethernet card and RJ45 port.

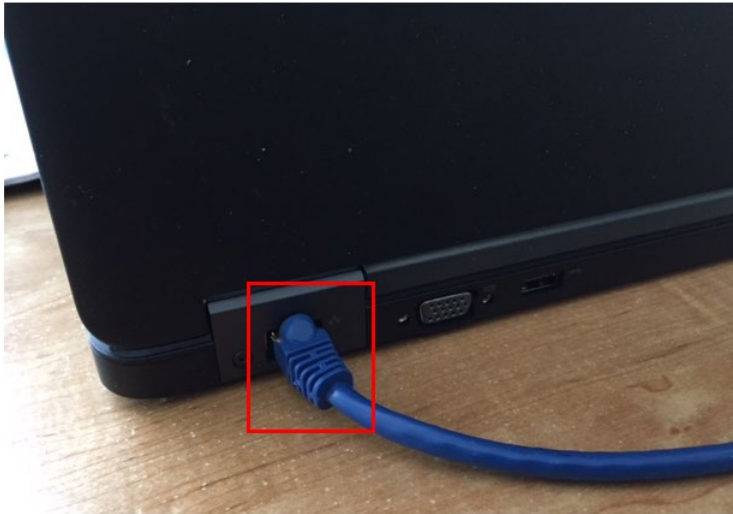


Ethernet is standard in a W900 controller. Open the controller front door, and on the backside, bottom center, you will find the Ethernet RJ45 port.





Locate the Ethernet RJ45 port on the computer, and connect the cable here.



Change your computer LAN (local area network) settings: WINDOWS Operating Systems

For XP: Control Panel > Network and Internet Connections > Network Connections > Local Area Network

For Vista: Control Panel > Network and Sharing Center > Manage Network Connections

For Windows 7: Control Panel > View Network Status and Tasks

For Windows 8: On the desktop screen in the lower right of the taskbar there should be a network icon, either a monitor or wifi bars. Right click that and open network and sharing center.

For Windows 10: Control Panel > Network and Sharing Center > Change Adapter Settings

Right-click on the LAN connection, and choose Properties.

For Windows XP: Highlight Internet Protocol (TCP-IP)

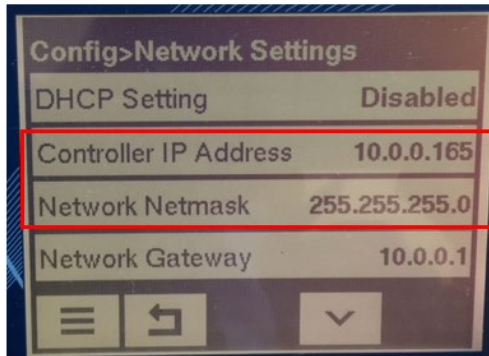
For Vista, Windows 7, Windows 8, Windows10: Highlight Internet Protocol Version 4 (TCP/IPv4)

Select *Use the following IP address*

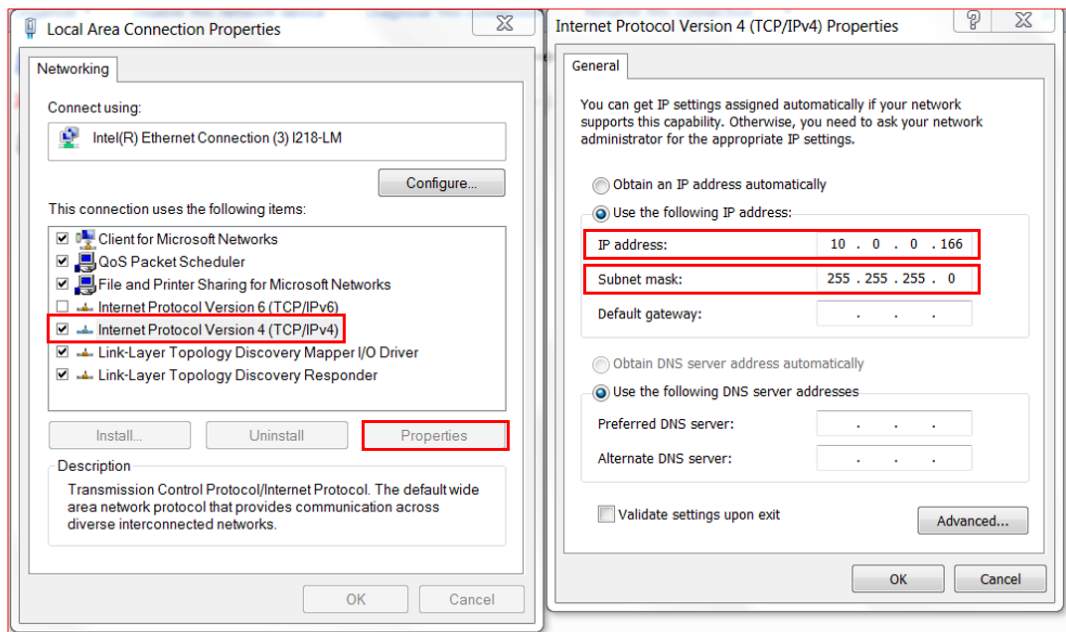
Please recall: Your controller IP addresses may be different. That's OK. To determine what your controller IP addresses are, using the controller **Touchscreen**, go to the **Main Menu**, then to the **Config Menu**, then to **Network (Ethernet) Settings**, and you will see exactly what these IP Addresses are. Write them down.



In this example, you can see in the screen shot below, that the controller IP is 10.0.0.165 and the Netmask is 255.255.255.0 Again, your controller IP Addresses may be different.



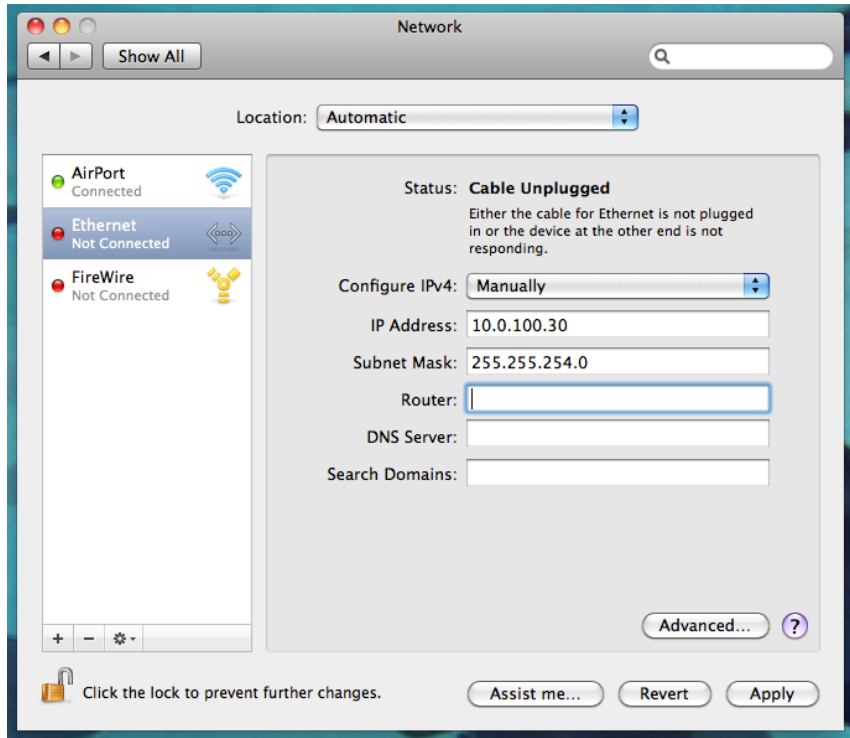
Using the example above, based on the Controller IP Address being 10.0.0.165, that means you need to change your computer Local Area Connection Address to one-off from the controller. For this example, we can make the computer's IP address 10.0.0.166 and the Subnet mask should be 255.255.255.0



Change computer LAN settings: Mac Operating System

For Mac OSX: System Preferences > Ethernet

Set **Configure IPv4** to Manually. Change the IP address to one-off the from controller. **If** the controller IP Address is 10.0.100.29, make the computer IP Address 10.0.100.30. Subnet mask should be 255.255.254.0. Please recall: Your controller IP addresses may be different.



Once you have completed these settings, please close out of these computer Network windows. Please open up a web browser, type 10.0.0.165 in the IP Address block and hit Enter. If your controller's IP Address is different than 10.0.0.165, then please enter your controller's IP Address in the web browser IP Address block and hit Enter.

The following screen will appear. The default Username (UN) is *admin*, and the default Password (PW) is 5555. Then press the **Log In** button. If the UN or PW have been changed, and you do not know what they are, please contact Walchem Customer Service at 508-429-1110, provide the controller serial number, and temporary log in credentials can be generated and sent to you.



Controller Log In

Username

Password

As an additional note:

On the Security webpage there is also a setting for the Log in Timeout, which is the time limit for the web connection to be idle before requiring the user to log in again. Having this setting short is the best protection against unauthorized access.

Once logged in, the Home page will appear. Open a browser and type the numeric Controller IP address in the web page address field. The login screen should quickly appear. The default user name is admin and the default password is 5555. The default View-Only user name is user and default password is 1111. These can and should be changed in the Config menu, under Security Settings.

The screenshot displays the W600 Controller web interface. On the left is a navigation menu with options: Home, Alarms, Inputs, Outputs, Config, Global Settings, Security Settings (highlighted with a red box), Display Settings, Network Settings, Email Report Settings, File Utilities, Controller Details, Graphs, Instruction Manual, VTouch, Walchem.com, and Admin Log Out. The main content area shows the 'Controller Log In' form with fields for Username and Password, and a 'Log In' button. Below this, the 'Security Settings' page is visible, showing the date (2018-Mar-15) and time (13:27:32). It includes fields for View-Only Username (user), View-Only Password, Admin Username (admin), and Admin Password. The 'Log In Timeout [min]' field is set to 10 and is highlighted with a red box.