

LOW MAINTENANCE

FAST RESPONSE

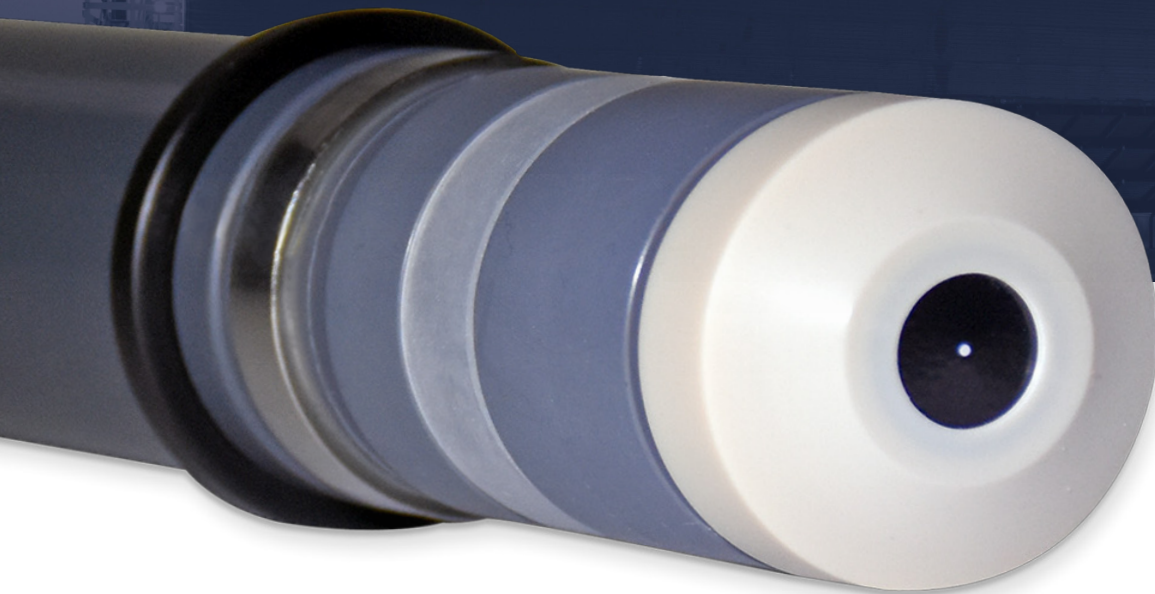
NO WASTE

STABILIZED BROMINE SENSOR

No costly reagents or tubing to replace

Continuous measurement technique

Sample can be returned to the process under pressure



Walchem's

Amperometric Stabilized Bromine Sensors offer a cost-effective and reliable solution to your control requirements. The sensors continuously and directly measure the chemical concentration, without the use of reagents.

Where ORP sensors and other amperometric sensors cannot reliably and repeatably measure bromine that is stabilized with sulfamate, **this sensor can!**

W A L C H E M

IWAKI America Inc.

Walchem integrates its advanced sensing, instrumentation, fluid handling and communications technologies to deliver reliable and innovative solutions to the global water treatment market. Our in-house engineering is driven by quality, technology and innovation.

For more information on the entire Walchem product line, visit walchem.com

	104318	104319
Measurement Specifications		
Range (Nominal)	0-2 ppm	0-20 ppm
Resolution	0.001 ppm	0.01 ppm
Calibration	Weekly, as determined by DPD-4 method	
Interferences	Chlorine and Chlorine Dioxide are also measured	
Flow rate of sample	30-100 lph (0.13 to 0.44 13 gal/min)	
pH of sample	6.5 – 9.5	
Conductivity Range	10 μ S/cm minimum	
Response time	2 minutes	
Conditioning time	2 hours	
Electrical Specifications		
Power requirements	\pm 5 VDC, 10 mA maximum	
Signal	0 to -2000 mV DC	
Maximum cable length	30 meters (100 feet)	
Extension cable	2 twisted pair, 22 AWG, shielded, 35 pF/ft (Walchem 100084, Belden 8723)	
Mechanical Specifications		
Operating Pressure	0-6 bar (0-90 psi)	
Operating Temperature	0-45 °C (32-113 °F)	
Sensor materials	PVC, PEEK, Stainless Steel, Microporous hydrophilic membrane	
Flow manifold materials	PVC, Isoplast, FKM, acrylic, GFRPP, 316 SS	
Flow cell inlet	1/4" NPTF	
Flow cell outlet	3/4" NPTF	
Storage		
Sensor	Unlimited if stored dry without electrolyte at 5-40 °C (41-104 °F)	
Electrolyte	In original bottle protected from sunlight at 5 to 35°C, 1 year or until specified expiration date	
Membrane Cap	Unlimited if unused in original packaging at 5-40 °C (41-104 °F) Used membrane caps cannot be stored!	

ORDERING INFORMATION

For W100, W600, W900 and Intuition Series Controllers

Choose one sensor:

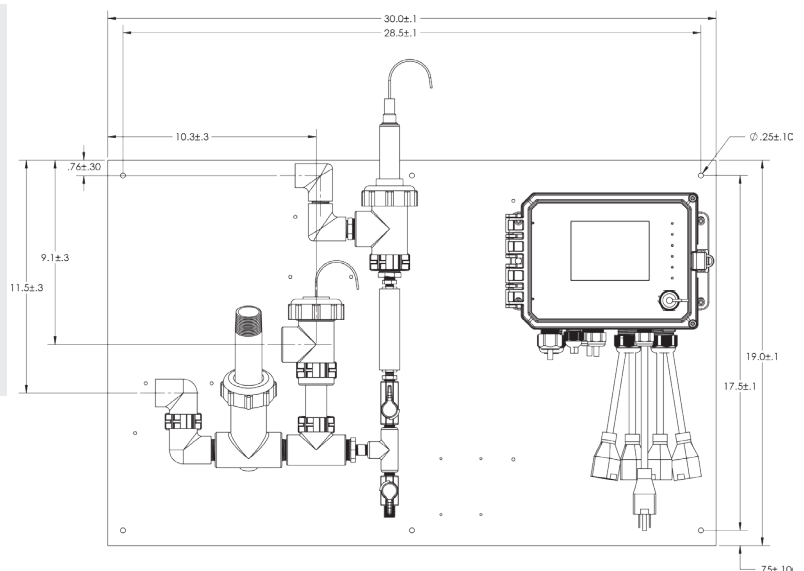
104318 Sensor, stabilized bromine, 0-2 ppm
or 104319 Sensor, stabilized bromine, 0-20 ppm

Choose one flow cell:

W600-DS-PN Flow switch manifold on panel, 3' cable or
W600-DS-FN Flow cell, 20' cable



Scan the QR code with your smartphone camera to access more detailed information!



Walchem, Iwaki America Inc.

Five Boynton Road Hopping Brook Park | Holliston, MA 01746 USA | Phone 508-429-1110 P/N 180850.C March 2022