

# 30/50 Gallon Polyethylene Tanks



- Molded-in calibration scale
- Tapered sides permit nesting for shipping and storage economy
- Special pump mount cover
- Economical



In many bulk-storage installations, it is not convenient to locate a metering pump near the chemical supply, so frequently, smaller storage tanks or “day tanks” will be used to keep chemical in a more convenient location, such as closer to the injection point or in a controlled climate.

Walchem offers small day tanks convenient for these applications and fits the needs of many small chemical storage or mixing applications.

The Walchem 30 and 50 gallon molded tanks are one-piece construction made from 1/8” thick white translucent linear low density polyethylene (LLDPE). LLDPE is very chemically inert and can hold all but the harshest of chemicals. Chemical level can easily be seen through the tanks and with the molded-in 5 gallon graduations, it is easy to obtain a fast volume estimate. They are tapered by design, enabling nesting for convenient shipping and can be shipped by standard UPS. Covers are constructed out of blue molded polyethylene with recesses and holes for mounting a metering pump, agitator and liquid level switch.

## Specifications

Model 934-C	30 gallon tank with cover Shipping weight: 20 lbs (9.1 kg)
Model 944-C	50 gallon tank with cover Shipping weight: 25 lbs (11.4 kg)
Maximum solution/air temperature	110°F (43°C)
Minimum solution/air temperature	0°F (-18°C)
Materials of construction	Tank: White translucent Linear Low Density Polyethylene, 1/8” thick Lid: Blue Linear Low Density Polyethylene

### Notes:

1. Full flat bottom support required.
2. Not suitable for use with concentrated organic solvents, oils and related materials.

**W A L C H E M**

IWAKI America Inc.

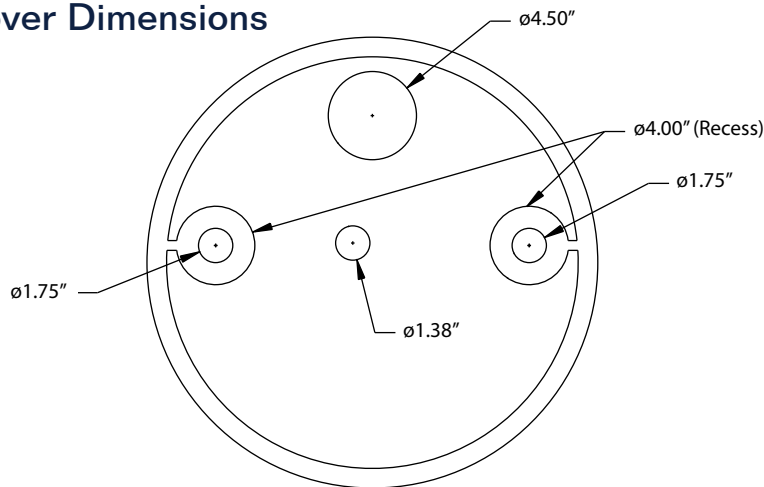
# Polyethylene Mix Tanks



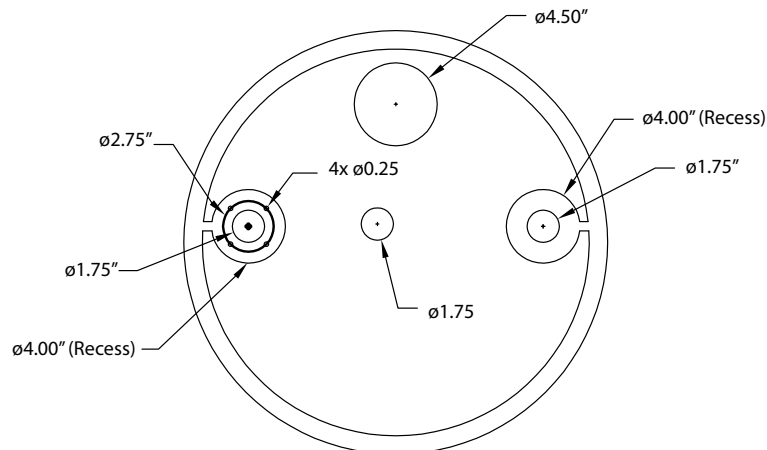
## Ordering Information

Part#	Description	Qty
934-C	30 gallon tank assembly with non-drilled cover, fill line and accessory caps	1
934-2C	30 gallon tank assembly with drilled cover, fill line and accessory caps	1
944-C	50 gallon tank assembly with non-drilled cover, fill line and accessory caps	1
944-2C	50 gallon tank assembly with drilled cover, fill line and accessory caps	1
Component parts:		
1296	Cap/Plug for fill hole, 4.50"	1
3037-W	Cap/Plug for accessory hole(s), 1.75"	2
2683-CW	Cover, not drilled	1
2683-2CW	Cover, drilled	1
3039-W	Tank, 50 Gallon	1
4558	Tank, 30 Gallon	1

### 944-C or 934-C Cover Dimensions



### 944-2C or 934-2C Cover Dimensions (Drilled for Walchem Mixer and suction tube)



180542.A Jan 2014



**WALCHEM**  
IWAKI America Inc.

Walchem, Iwaki America Inc.  
Five Boynton Road Hopping Brook Park  
Holliston, MA 01746 USA  
Phone: 508-429-1110 [www.walchem.com](http://www.walchem.com)