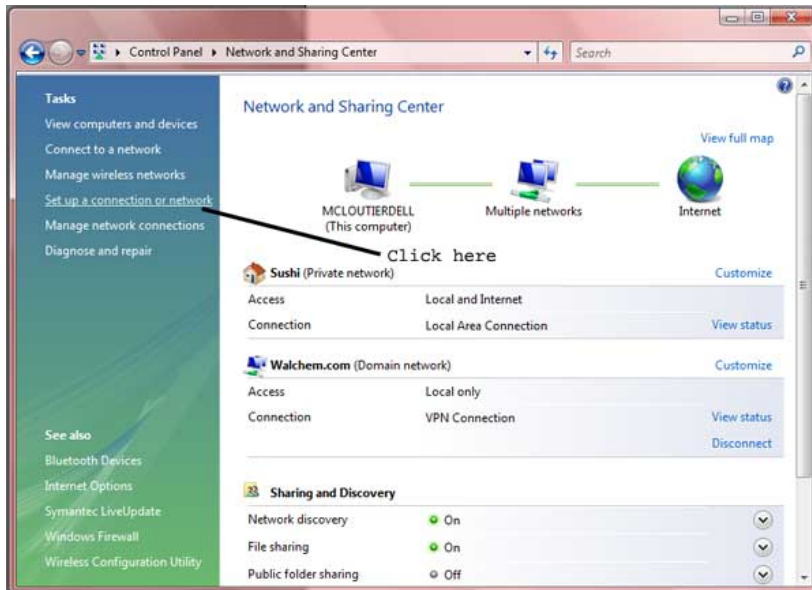


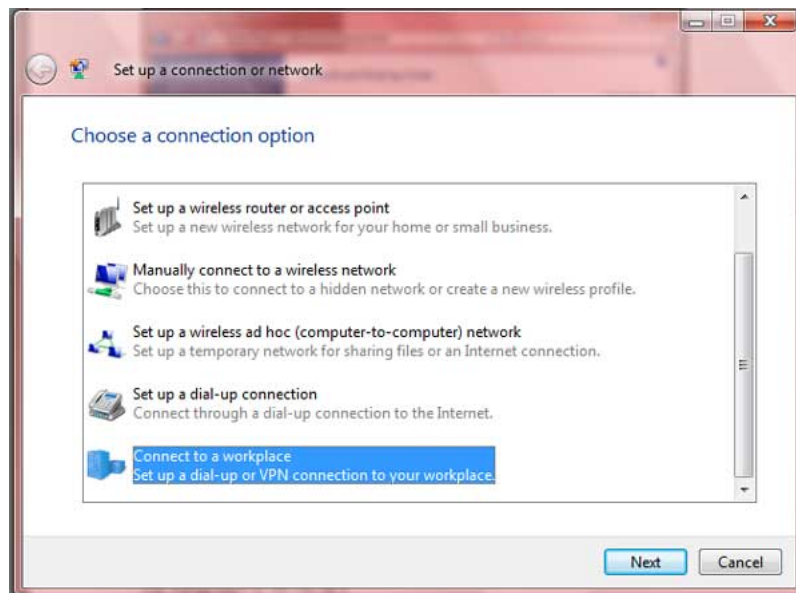
Configuring your PC Modem with Vista

Go to **Control Panel > Network and Sharing Center**.

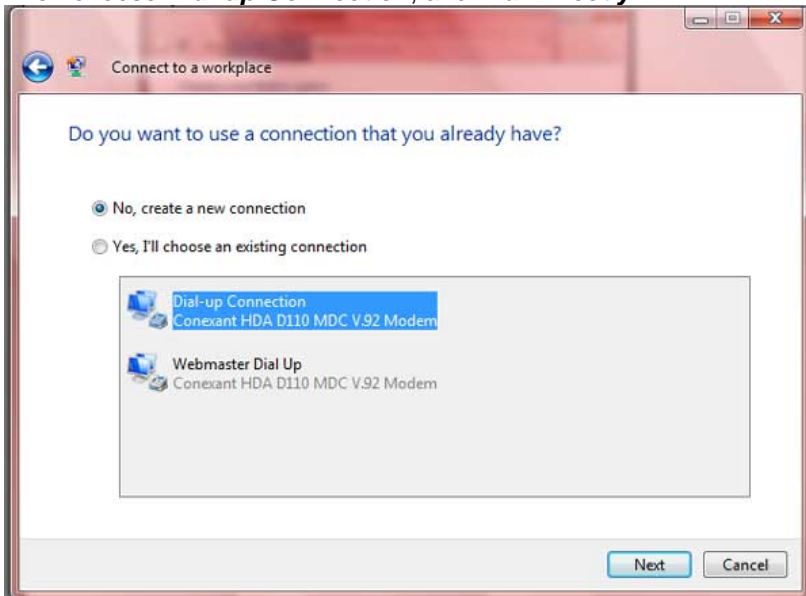
Once in the **Network and Sharing Center**, choose **Set-up a New Connection**, which is a link on the left.



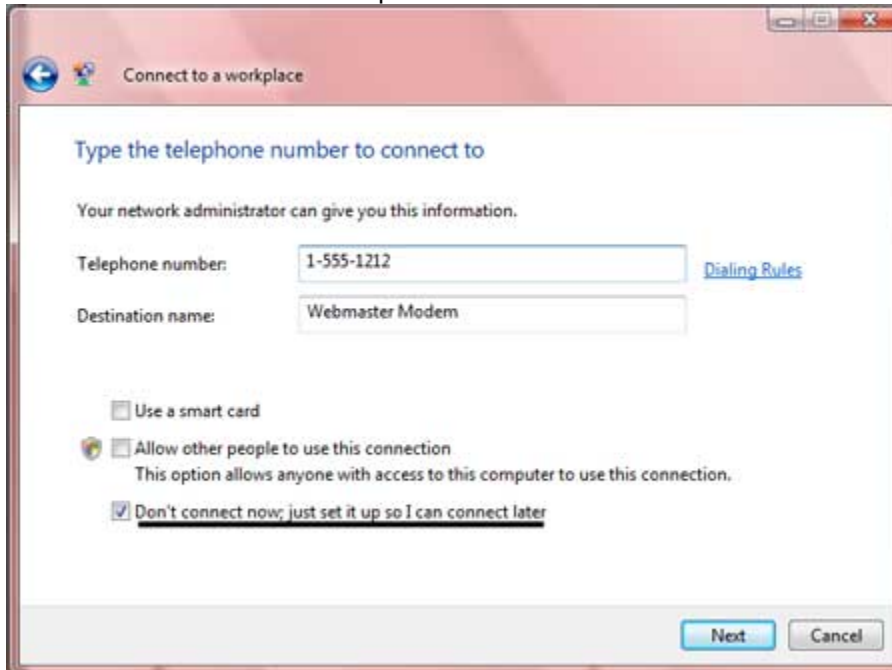
When you click, you'll get a page of choices, and choose **Connect to a Workplace**.



Then choose **Dial-up Connection**, and **Dial Directly**.



Once here, you add a phone number, but it can be changed whenever you use the adaptor. And click the box "**Don't connect now**". You don't need a user name or password.



Once created, go to **Manage Network Connections**, and click the one you made, right click, and then Properties. Click on Networking, uncheck everything except the 2 TCP-IP, and highlight TCP-IP4; Properties, then change the IP to 199.199.199.4